

SPRUCE CREEK WATER QUALITY ASSESSMENT

June 12 through September 25, 2007

<http://www.sprucecreekassociation.org/monitoring.html>

READINGS

Tidal water is classified as SA, SB, SC from best to worse. Spruce Creek is classified as SB (tidal sections) and B (non-tidal sections). In terms of DO, the minimum standard for SB is 85% saturation at any time. The minimum standard for B is 75% saturation or 7 mg/l whichever is greater.

The oxygen holding capacity of water is a function of temperature and salinity. It is possible for water to hold >100% capacity when the input of oxygen from algae or plants is greater than the transfer of oxygen to the air.

SITES

Site 1 = Bond Road by Spruce & Barbers Creeks

Site 2 = Eagle Point in Admiralty Village

Site 3 = Above Roger's Park

Site 4 = Trading Post

Site 5 = Picot Road

Site 6 = Wilson Road/Route 101

Sponsors/Reviewers

Malcom Burson

Maine Department of Environmental Protection

17 State House Station

Augusta, Me. 04333-0017

Malcolm.c.burson@maine.gov

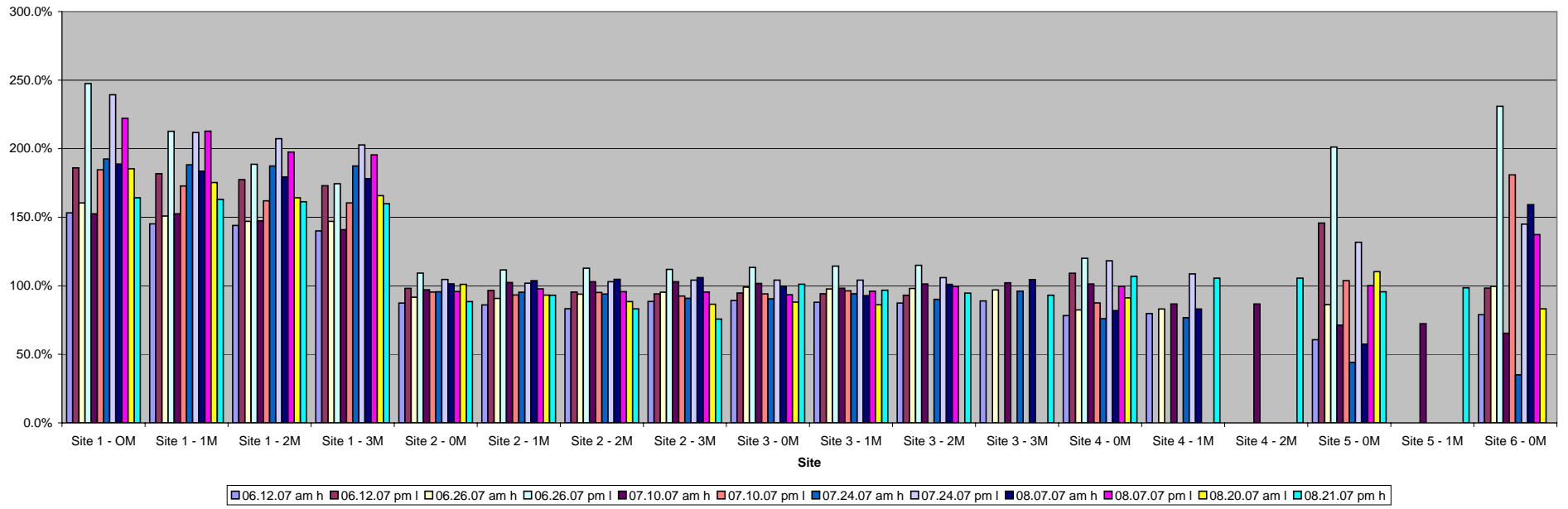
Phone (207) 287-7755

Fax (207) 287-2814

Dave Miller

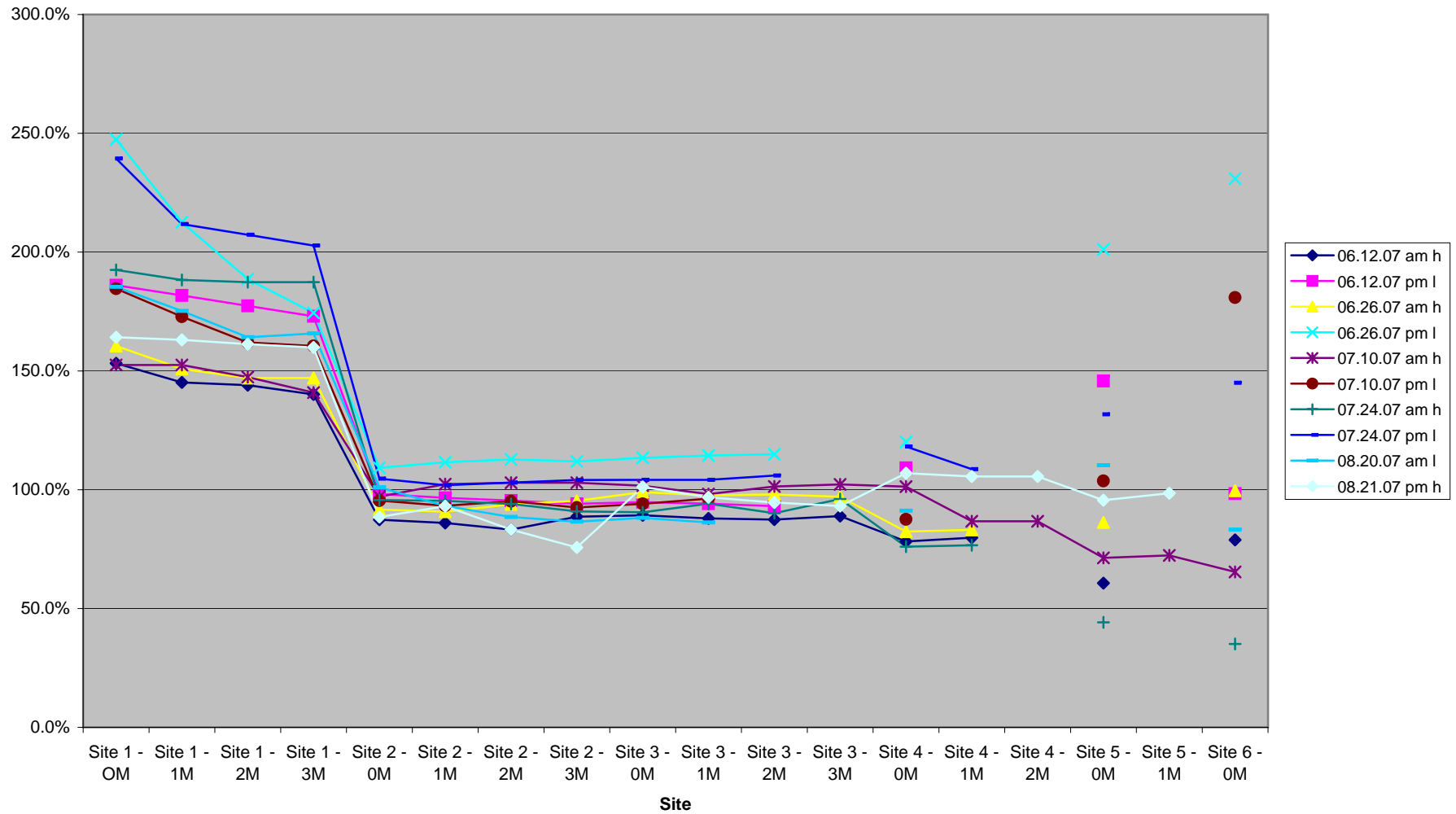
Dave.B.Miller@maine.gov

**Spruce Creek Water Quality Assessment
% DO Saturation (Summer 2007)**



NOTE: Meter re-calibrated on 06.26.07 for second reading (4th in data series).

Spruce Creek Water Quality Assessment
% DO Saturation (Summer 2006)
OM Measurements Only



SPRUCE CREEK ASSOCIATION - Water Quality Data							
Date	06/12/07						
Time	0725						
Monitors	Steve Bos & Marilyn Ecker						
Weather Comments	Overcast, 20oC						
Cloud Cover	Partly cloudy						
Wind Conditions	Slight breeze						
Wind Direction	NW						
Waves							
Tide	High - 0857 / +8.9ft						
RESULTS	Time		OM	1M	2M	3M	Comments
Site 1: Bond Rd	0840	DO (mg/L)	7.7	7.7	7.9	8.0	
		Conductivity (us/cm)	32.1	32.9	33.0	33.4	
		Spec Cond (ms/cm)	39.8	41.4	41.9	42.7	
		Salinity (ppt)	25.4	26.5	27.0	27.5	
		Temp (oC)	14.8	14.2	14.1	13.8	
Site 2: Eagle Pt	0830	DO (mg/L)	7.5	7.4	7.2	7.7	
		Conductivity (us/cm)	31.5	31.8	31.8	32.1	
		Spec Cond (ms/cm)	38.6	39.0	39.6	40.1	
		Salinity (ppt)	24.6	24.9	25.3	25.6	
		Temp (oC)	15.5	15.3	14.9	14.6	
Site 3: Moffat's Dock	0820	DO (mg/L)	7.7	7.6	7.6	7.7	
		Conductivity (us/cm)	31.2	31.1	31.4	32.3	
		Spec Cond (ms/cm)	38.3	38.5	39.0	40.3	
		Salinity (ppt)	24.4	24.5	24.9	25.8	
		Temp (oC)	15.3	15.2	14.8	14.7	
Site 4: Trading Post	0800	DO (mg/L)	6.6	6.7			Breezy NW
		Conductivity (us/cm)	32.2	32.4			
		Spec Cond (ms/cm)	38.4	38.6			
		Salinity (ppt)	24.5	24.6			
		Temp (oC)	16.7	16.6			
Site 5: Picott Rd	0750	DO (mg/L)	5.6				Great blue, heavy algae, enteromorpha (high conductance?)
		Conductivity (us/cm)	31.9				
		Spec Cond (ms/cm)	36.2				
		Salinity (ppt)	1.9				
		Temp (oC)	18.7				
Site 6: Wilson Rd	0745	DO (mg/L)	7.6				
		Conductivity (us/cm)	27.9				
		Spec Cond (ms/cm)	33.0				
		Salinity (ppt)	0.2				
		Temp (oC)	17.1				
Repeat Site: 5	0750	DO (mg/L)	5.4				
		Conductivity (us/cm)	31.7				
		Spec Cond (ms/cm)	36.2				
		Salinity (ppt)	1.9				
		Temp (oC)	18.7				
Entered by	PMF						
Proofed by							
			Temp	Salinity	DO	Saturation	
			C	ppt	ppm	%	
		Site 1 - OM	14.8	7.7	14.8	153.2%	
		Site 1 - 1M	14.2	7.7	14.2	145.1%	
		Site 1 - 2M	14.1	7.9	14.1	144.0%	
		Site 1 - 3M	13.8	8.0	13.8	140.1%	
		Site 2 - OM	15.5	24.6	7.5	87.4%	
		Site 2 - 1M	15.3	24.9	7.4	86.0%	
		Site 2 - 2M	14.9	25.3	7.2	83.2%	
		Site 2 - 3M	14.6	25.6	7.7	88.6%	
		Site 3 - OM	15.3	24.4	7.7	89.2%	
		Site 3 - 1M	15.2	24.5	7.6	87.9%	
		Site 3 - 2M	14.8	24.9	7.6	87.4%	
		Site 3 - 3M	14.7	25.8	7.7	88.9%	
		Site 4 - OM	16.7	24.5	6.6	78.2%	
		Site 4 - 1M	16.6	24.6	6.7	79.8%	
		Site 4 - 2M					
		Site 5 - OM	18.7	1.9	5.6	60.7%	
		Site 5 - 1M					
		Site 6 - OM	17.1	0.2	7.6	78.9%	

SPRUCE CREEK ASSOCIATION - Water Quality Data							
Date	06/12/07						
Time	1345						
Monitors	Dick Loehr & Steve Hall						
Weather Comments	Overcast, Raining at 2pm						
Cloud Cover	Intermittent rain						
Wind Conditions	Breezy						
Wind Direction	NW						
Waves	Small waves						
Tide	Low - 15:03 / +0.2 ft						
RESULTS	Time		OM	1M	2M	3M	Comments
Site 1: Bond Rd	1522	DO (mg/L)	8.0	8.1	8.1	8.0	Sunny
		Conductivity (us/cm)	33.5	33.4	33.2	33.0	
		Spec Cond (ms/cm)	39.6	39.7	39.7	39.9	
		Salinity (ppt)	25.3	25.3	25.4	25.5	
		Temp (oC)	17.1	16.8	16.5	16.2	
Site 2: Eagle Pt	1509	DO (mg/L)	8.0	8.0	7.9	7.8	Sunny
		Conductivity (us/cm)	33.6	33.4	33.3	33.3	
		Spec Cond (ms/cm)	38.9	39.1	39.2	39.3	
		Salinity (ppt)	24.8	24.8	25.1	25.1	
		Temp (oC)	18.0	17.3	17.1	16.9	
Site 3: Moffat's Dock	1456	DO (mg/L)	7.6	7.6	7.6		#1 Meter accidentally turned off in tub. Cloudy. 3rd measurement taken at 1.25m.
		Conductivity (us/cm)	33.2	33.4	38.8		
		Spec Cond (ms/cm)	37.7	38.0	33.7		
		Salinity (ppt)	23.9	24.2	24.7		
		Temp (oC)	18.9	18.6	18.2		
Site 4: Trading Post	1550	DO (mg/L)	8.4				Sediment making water turbid.
		Conductivity (us/cm)	6.1				
		Spec Cond (ms/cm)	31.9				
		Salinity (ppt)	19.9				
		Temp (oC)	22.8				
Site 5: Picott Rd	1605	DO (mg/L)	12.1				Tide going out.
		Conductivity (us/cm)	7.1				
		Spec Cond (ms/cm)	7.3				
		Salinity (ppt)	4.8				
		Temp (oC)	23.1				
Site 6: Wilson Rd	1613	DO (mg/L)	8.7				
		Conductivity (us/cm)	12.3				
		Spec Cond (ms/cm)	10.5				
		Salinity (ppt)	0.0				
		Temp (oC)	21.7				
Repeat Site: 4	1550	DO (mg/L)	5.8			8.5	Took 3 readings at OM at site 4.
		Conductivity (us/cm)	30.1			30.5	
		Spec Cond (ms/cm)	31.7			31.7	
		Salinity (ppt)	19.8			19.8	
		Temp (oC)	22.9			22.9	
Entered by	PMF						
Proofed by							
			Temp	Salinity	DO	Saturation	
			C	ppt	ppm	%	
		Site 1 - OM	17.1	8.0	17.1	186.0%	
		Site 1 - 1M	16.8	8.1	16.8	181.8%	
		Site 1 - 2M	16.5	8.1	16.5	177.4%	
		Site 1 - 3M	16.2	8.0	16.2	173.0%	
		Site 2 - OM	18.0	24.8	8.0	98.2%	
		Site 2 - 1M	17.3	24.8	8.0	96.6%	
		Site 2 - 2M	17.1	25.1	7.9	95.4%	
		Site 2 - 3M	16.9	25.1	7.8	94.1%	
		Site 3 - OM	18.9	23.9	7.6	94.8%	
		Site 3 - 1M	18.6	24.2	7.6	94.1%	
		Site 3 - 2M	18.2	24.7	7.6	93.1%	
		Site 3 - 3M					
		Site 4 - OM	22.8	19.9	8.4	109.2%	
		Site 4 - 1M					
		Site 4 - 2M					
		Site 5 - OM	23.1	4.8	12.1	145.8%	
		Site 5 - 1M					
		Site 6 - OM	21.7	0.0	8.7	98.4%	

SPRUCE CREEK ASSOCIATION - Water Quality Data							
Date	06.26.07						
Time	0800						
Monitors	Phyllis Ford, Will Brewster, Jeff Diefendorf, Barbara Diefendorf						
Weather Comments	Clear, warm, muggy						
Cloud Cover	None						
Wind Conditions	Slight breeze						
Wind Direction	NW						
Waves	Calm						
Tide	High - 08:52 +7.5						
RESULTS	Time		OM	1M	2M	3M	Comments
Site 1: Bond Rd	0905	DO (mg/L)	8.1	8.1	8.3	8.3	
		Conductivity (us/cm)	36.5	36.2	36.0	36.0	
		Spec Cond (ms/cm)	44.7	45.1	45.3	45.3	
		Salinity (ppt)	29.0	29.2	29.3	29.4	
		Temp (oC)	15.3	14.6	14.3	14.3	
Site 2: Eagle Pt	0850	DO (mg/L)	7.6	7.6	7.9	8.1	Heron taking off
		Conductivity (us/cm)	37.2	36.6	36.4	36.1	
		Spec Cond (ms/cm)	44.6	44.7	44.9	45.0	
		Salinity (ppt)	27.3	29.0	29.1	29.2	
		Temp (oC)	16.4	15.4	15.1	14.6	
Site 3: Moffat's Dock	0835	DO (mg/L)	8.2	8.2	8.3	8.2	
		Conductivity (us/cm)	36.8	36.3	36.2	36.5	
		Spec Cond (ms/cm)	44.5	44.6	44.9	45.4	
		Salinity (ppt)	28.8	28.8	29.1	29.4	
		Temp (oC)	16.0	15.3	14.8	14.8	
Site 4: Trading Post	0935	DO (mg/L)	6.4	6.5			Tide looking slack; brown foam around dock.
		Conductivity (us/cm)	39.8	39.5			
		Spec Cond (ms/cm)	44.6	44.7			
		Salinity (ppt)	28.9	29.0			
		Temp (oC)	19.3	18.9			
Site 5: Picott Rd	0945	DO (mg/L)	6.3				Tide still in-bound; lots of green stringy algae.
		Conductivity (us/cm)	39.4				
		Spec Cond (ms/cm)	40.6				
		Salinity (ppt)	26.0				
		Temp (oC)	23.6				
Site 6: Wilson Rd	0955	DO (mg/L)	8.6				Slight trickle out going. Culvert in bad shape. Tide is super low; lots of stringy green algae.
		Conductivity (us/cm)	101.1				
		Spec Cond (ms/cm)	105.1				
		Salinity (ppt)	0.5				
		Temp (oC)	22.5				
Repeat Site: 5	0945	DO (mg/L)	6.3				
		Conductivity (us/cm)	39.5				
		Spec Cond (ms/cm)	40.7				
		Salinity (ppt)	26.0				
		Temp (oC)	23.5				
Entered by	PMF						
Proofed by							
			Temp	Salinity	DO	Saturation	
			C	ppt	ppm	%	
		Site 1 - OM	15.3	8.1	15.3	160.5%	
		Site 1 - 1M	14.6	8.1	14.6	150.9%	
		Site 1 - 2M	14.3	8.3	14.3	147.0%	
		Site 1 - 3M	14.3	8.3	14.3	147.0%	
		Site 2 - OM	16.4	27.3	7.6	91.6%	
		Site 2 - 1M	15.4	29.0	7.6	90.8%	
		Site 2 - 2M	15.1	29.1	7.9	93.8%	
		Site 2 - 3M	14.6	29.2	8.1	95.3%	
		Site 3 - OM	16.0	28.8	8.2	99.0%	
		Site 3 - 1M	15.3	28.8	8.2	97.6%	
		Site 3 - 2M	14.8	29.1	8.3	98.0%	
		Site 3 - 3M	14.8	29.4	8.2	97.0%	
		Site 4 - OM	19.3	28.9	6.4	82.4%	
		Site 4 - 1M	18.9	29.0	6.5	83.1%	
		Site 4 - 2M					
		Site 5 - OM	23.6	26.0	6.3	86.2%	
		Site 5 - 1M					
		Site 6 - OM	22.5	0.5	8.6	99.6%	

SPRUCE CREEK ASSOCIATION - Water Quality Data							
Date	06.26.07						
Time	1440						
Monitors	Paula Ledgett, Ron Ledgett						
Weather Comments	Warm, hazy						
Cloud Cover	Haze						
Wind Conditions	Breezy						
Wind Direction	Warm, hazy						
Waves	Calm						
Tide	Low - 14:50 +1.9						
RESULTS	Time		OM	1M	2M	3M	Comments
Site 1: Bond Rd	1525	DO (mg/L)	8.4	8.8	9.0	9.3	
		Conductivity (us/cm)					
		Spec Cond (ms/cm)					
		Salinity (ppt)	28.9	29.1	29.0	29.2	
		Temp (oC)	21.0	18.8	17.2	16.2	
Site 2: Eagle Pt	1512	DO (mg/L)	8.2	8.6	8.8	8.9	
		Conductivity (us/cm)					
		Spec Cond (ms/cm)					
		Salinity (ppt)	29.1	28.9	29.1	29.1	
		Temp (oC)	21.1	19.7	19.0	18.0	
Site 3: Moffat's Dock	1503	DO (mg/L)	8.4	8.6	8.7		
		Conductivity (us/cm)					
		Spec Cond (ms/cm)					
		Salinity (ppt)	29.2	29.1	29.2		
		Temp (oC)	21.8	21.0	20.6		
Site 4: Trading Post	1603	DO (mg/L)	7.8				Water has green tint to it.
		Conductivity (us/cm)					
		Spec Cond (ms/cm)					
		Salinity (ppt)	27.9				
		Temp (oC)	29.9				
Site 5: Picott Rd	1553	DO (mg/L)	13.3				Still water. Lots of growth on rocks.
		Conductivity (us/cm)					
		Spec Cond (ms/cm)					
		Salinity (ppt)	20.2				
		Temp (oC)	31.4				
Site 6: Wilson Rd	1543	DO (mg/L)	17.9				Still outward flow, lots of green growth on rocks. Pond scummy.
		Conductivity (us/cm)					
		Spec Cond (ms/cm)					
		Salinity (ppt)	0.2				
		Temp (oC)	28.5				
Repeat Site: 3	1503	DO (mg/L)	8.1	8.7	8.8		
		Conductivity (us/cm)					
		Spec Cond (ms/cm)					
		Salinity (ppt)	29.2	29.2	29.1		
		Temp (oC)	21.8	20.9	20.6		
Entered by	PMF - NOTE: Used old data sheets so didn't record Cond or Spec Cond. ALSO: First monitoring after recalibrating YSI 85.						
Proofed by							
			Temp	Salinity	DO	Saturation	
			C	ppt	ppm	%	
		Site 1 - OM	21.0	8.4	21.0	247.4%	
		Site 1 - 1M	18.8	8.8	18.8	212.6%	
		Site 1 - 2M	17.2	9.0	17.2	188.7%	
		Site 1 - 3M	16.2	9.3	16.2	174.4%	
		Site 2 - OM	21.1	29.1	8.2	109.3%	
		Site 2 - 1M	19.7	28.9	8.6	111.5%	
		Site 2 - 2M	19.0	29.1	8.8	112.8%	
		Site 2 - 3M	18.0	29.1	8.9	111.9%	
		Site 3 - OM	21.8	29.2	8.4	113.4%	
		Site 3 - 1M	21.0	29.1	8.6	114.4%	
		Site 3 - 2M	20.6	29.2	8.7	114.9%	
		Site 3 - 3M					
		Site 4 - OM	29.9	27.9	7.8	120.1%	
		Site 4 - 1M					
		Site 4 - 2M					
		Site 5 - OM	31.4	20.2	13.3	201.2%	
		Site 5 - 1M					
		Site 6 - OM	28.5	0.2	17.9	231.0%	

SPRUCE CREEK ASSOCIATION - Water Quality Data							
Date	07.10.07						
Time	0752						
Monitors	Steve Bos & Gail Simonds						
Weather Comments	Overcast, foggy, 65o						
Cloud Cover	Overcast						
Wind Conditions	Calm						
Wind Direction	-						
Waves	Ripples						
Tide	High - 7:38 +8.5 (Low high tide in cycle)						
RESULTS	Time		OM	1M	2M	3M	Comments
Site 1: Bond Rd	0852	DO (mg/L)	8.4	8.4	8.7	8.9	Debris in water. Recent heavy thunderstorms preceding two days. Light fog.
		Conductivity (us/cm)	37.6	37.5	37.2	37.0	
		Spec Cond (ms/cm)	46.9	46.9	47.1	47.2	
		Salinity (ppt)	30.4	30.5	30.6	30.7	
		Temp (oC)	14.7	14.7	14.3	13.8	
Site 2: Eagle Pt	0845	DO (mg/L)	8.3	8.7	8.8	8.8	Debris, a lot of grass, leaves & sticks.
		Conductivity (us/cm)	37.3	37.1	37.0	37.0	
		Spec Cond (ms/cm)	46.8	46.9	47.0	47.0	
		Salinity (ppt)	30.5	30.5	30.6	30.6	
		Temp (oC)	14.2	14.2	13.9	13.9	
Site 3: Moffat's Dock	0836	DO (mg/L)	8.6	8.3	8.6	8.8	1 hour past high. Recent thunderstorms. A lot of debris in water - sea grass, logs, leaves, mud (surface). Some light fog.
		Conductivity (us/cm)	37.4	37.3	37.1	37.1	
		Spec Cond (ms/cm)	46.6	46.8	46.8	47.2	
		Salinity (ppt)	30.3	30.4	30.4	30.7	
		Temp (oC)	14.5	14.5	14.3	13.8	
Site 4: Trading Post	0752	DO (mg/L)	8.4	7.2	7.2		Cloudy. Murkiness (rain recently).
		Conductivity (us/cm)	37.6	37.5	37.5		
		Spec Cond (ms/cm)	45.6	45.7	45.7		
		Salinity (ppt)	29.6	29.7	29.7		
		Temp (oC)	15.7	15.6	15.6		
Site 5: Picott Rd	0805	DO (mg/L)	5.8	5.9			Muddy water. Tide still coming in.
		Conductivity (us/cm)	35.8	36.8			
		Spec Cond (ms/cm)	41.3	43.5			
		Salinity (ppt)	27.0	28.1			
		Temp (oC)	17.5	17.0			
Site 6: Wilson Rd	0809	DO (mg/L)	6.2				No depth. Tide still flowing in. Low high tide.
		Conductivity (us/cm)	28.6				
		Spec Cond (ms/cm)	32.7				
		Salinity (ppt)	1.8				
		Temp (oC)	17.4				
Repeat Site: 3	0836	DO (mg/L)	8.1	8.3	8.3	8.2	
		Conductivity (us/cm)	37.4	37.1	37.1	37.1	
		Spec Cond (ms/cm)	46.8	46.8	46.9	47.1	
		Salinity (ppt)	30.4	30.4	30.5	30.7	
		Temp (oC)	14.4	14.5	14.1	13.8	
Entered by	PMF						
Proofed by							
			Temp	Salinity	DO	Saturation	
			C	ppt	ppm	%	
		Site 1 - OM	14.7	8.4	14.7	152.5%	
		Site 1 - 1M	14.7	8.4	14.7	152.5%	
		Site 1 - 2M	14.3	8.7	14.3	147.4%	
		Site 1 - 3M	13.8	8.9	13.8	140.9%	
		Site 2 - OM	14.2	30.5	8.3	97.1%	
		Site 2 - 1M	14.2	30.5	8.7	102.4%	
		Site 2 - 2M	13.9	30.6	8.8	103.0%	
		Site 2 - 3M	13.9	30.6	8.8	103.0%	
		Site 3 - OM	14.5	30.3	8.6	101.7%	
		Site 3 - 1M	14.5	30.4	8.3	98.2%	
		Site 3 - 2M	14.3	30.4	8.6	101.3%	
		Site 3 - 3M	13.8	30.7	8.8	102.2%	
		Site 4 - OM	15.7	29.6	8.4	101.3%	
		Site 4 - 1M	15.6	29.7	7.2	86.7%	
		Site 4 - 2M	15.6	29.7	7.2	86.7%	
		Site 5 - OM	17.5	27.0	5.8	71.3%	
		Site 5 - 1M	17.0	28.1	5.9	72.3%	
		Site 6 - OM	17.4	1.8	6.2	65.4%	

SPRUCE CREEK ASSOCIATION - Water Quality Data							
Date	07.10.07						
Time	1240						
Monitors	Marilyn Ecker & Marge Pelletier						
Weather Comments	Overcast, humid						
Cloud Cover	Partly cloudy						
Wind Conditions	Slight breeze						
Wind Direction							
Waves	Calm						
Tide	Low - 1:44 +0.6						
RESULTS	Time		OM	1M	2M	3M	Comments
Site 1: Bond Rd	1347	DO (mg/L)	8.0	7.8	8.2	8.1	
		Conductivity (us/cm)	39.4	38.8	38.2	38.2	
		Spec Cond (ms/cm)	46.2	46.6	46.7	46.9	
		Salinity (ppt)	30.3	30.4	30.4	30.4	
		Temp (oC)	17.0	16.2	15.4	15.3	
Site 2: Eagle Pt	1330	DO (mg/L)	7.7	7.6	7.8	7.6	
		Conductivity (us/cm)	38.9	38.6	38.5	38.5	
		Spec Cond (ms/cm)	45.8	46.4	46.4	46.6	
		Salinity (ppt)	29.9	30.2	30.2	30.2	
		Temp (oC)	17.0	16.4	16.1	16.0	
Site 3: Moffat's Dock	1320	DO (mg/L)	7.4	7.7			
		Conductivity (us/cm)	38.5	38.9			
		Spec Cond (ms/cm)	44.4	45.3			
		Salinity (ppt)	28.7	29.4			
		Temp (oC)	18.7	17.6			
Site 4: Trading Post	1426	DO (mg/L)	6.6				Murky. Slow flow.
		Conductivity (us/cm)	38.2				
		Spec Cond (ms/cm)	41.8				
		Salinity (ppt)	25.5				
		Temp (oC)	22.0				
Site 5: Picott Rd	1415	DO (mg/L)	8.3				Domestic ducks & geese.
		Conductivity (us/cm)	19.4				
		Spec Cond (ms/cm)	20.1				
		Salinity (ppt)	12.0				
		Temp (oC)	23.0				
Site 6: Wilson Rd	1409	DO (mg/L)	16.0				Heavy green algae. Flowing.
		Conductivity (us/cm)	1000.2				
		Spec Cond (ms/cm)	1000.3				
		Salinity (ppt)	0.7				
		Temp (oC)	21.2				
Repeat Site: 2	1330	DO (mg/L)	7.5	7.4	7.5	7.6	
		Conductivity (us/cm)	38.8	38.6	38.5	38.4	
		Spec Cond (ms/cm)	46.5	46.4	46.5	46.6	
		Salinity (ppt)	30.2	30.2	30.3	30.0	
		Temp (oC)	16.5	16.3	16.0	16.0	
Entered by	PMF						
Proofed by							
			Temp	Salinity	DO	Saturation	
			C	ppt	ppm	%	
		Site 1 - OM	17.0	8.0	17.0	184.6%	
		Site 1 - 1M	16.2	7.8	16.2	172.8%	
		Site 1 - 2M	15.4	8.2	15.4	162.0%	
		Site 1 - 3M	15.3	8.1	15.3	160.5%	
		Site 2 - 0M	17.0	29.9	7.7	95.4%	
		Site 2 - 1M	16.4	30.2	7.6	93.3%	
		Site 2 - 2M	16.1	30.2	7.8	95.2%	
		Site 2 - 3M	16.0	30.2	7.6	92.5%	
		Site 3 - 0M	18.7	28.7	7.4	94.1%	
		Site 3 - 1M	17.6	29.4	7.7	96.3%	
		Site 3 - 2M					
		Site 3 - 3M					
		Site 4 - 0M	22.0	25.5	6.6	87.5%	
		Site 4 - 1M					
		Site 4 - 2M					
		Site 5 - 0M	23.0	12.0	8.3	103.7%	
		Site 5 - 1M					
		Site 6 - 0M	21.2	0.7	16.0	180.9%	

SPRUCE CREEK ASSOCIATION - Water Quality Data							
Date	07/24/07						
Time	0615						
Monitors	Dick Loehr & Steve Hall						
Weather Comments							
Cloud Cover	Fog/Haze						
Wind Conditions	Calm						
Wind Direction							
Waves	Calm						
Tide	High - 07:11 +7.2						
RESULTS	Time		OM	1M	2M	3M	Comments
Site 1: Bond Rd	0807	DO (mg/L)	7.2	7.4	7.8	7.8	
		Conductivity (us/cm)	39.1	39.0	39.0	39.1	
		Spec Cond (ms/cm)	45.6	45.8	45.9	44.9	
		Salinity (ppt)	29.6	29.8	29.8	29.8	
		Temp (oC)	17.6	17.3	17.2	17.2	
Site 2: Eagle Pt	0802	DO (mg/L)	7.7	7.6	7.5	7.3	
		Conductivity (us/cm)	38.8	38.9	39.0	39.0	
		Spec Cond (ms/cm)	45.3	45.5	45.5	45.6	
		Salinity (ppt)	29.4	29.4	29.5	29.6	
		Temp (oC)	17.6	17.5	17.5	17.4	
Site 3: Moffat's Dock	0750	DO (mg/L)	7.2	7.5	7.2	7.7	Water is calm
		Conductivity (us/cm)	38.1	39.0	39.6	39.3	
		Spec Cond (ms/cm)	45.3	45.4	45.9	45.9	
		Salinity (ppt)	29.4	29.5	29.8	29.9	
		Temp (oC)	17.6	17.5	17.9	17.5	
Site 4: Trading Post	0645	DO (mg/L)	5.9	6.0			Tide coming in. Strong flow. 12 dead fish near dock.
		Conductivity (us/cm)	40.2	40.2			
		Spec Cond (ms/cm)	45.3	45.4			
		Salinity (ppt)	29.4	29.4			
		Temp (oC)	19.1	19.0			
Site 5: Picott Rd	0655	DO (mg/L)	3.8				No incoming flow at 6:55 am - water is "still". 3rd reading probably my mistake - took 3 readings. (NOTE: I kept only the 2nd two readings and eliminated the first. - PMF)
		Conductivity (us/cm)	17.4				
		Spec Cond (ms/cm)	19.5				
		Salinity (ppt)	11.7				
		Temp (oC)	19.3				
Site 6: Wilson Rd	0720	DO (mg/L)	3.4				Smallish incoming flow. 3" of water. Conductivity showed no decimals?
		Conductivity (us/cm)	728.0				
		Spec Cond (ms/cm)	852.0				
		Salinity (ppt)	0.4				
		Temp (oC)	17.5				
Repeat Site: 5	0655	DO (mg/L)	3.8	3.1			Note: 2nd set of values is repeat readings from site 6.
		Conductivity (us/cm)	17.3	727.0			
		Spec Cond (ms/cm)	19.5	851.0			
		Salinity (ppt)	11.6	0.4			
		Temp (oC)	19.3	17.4			
Entered by	PMF						
Proofed by	PL						
			Temp	Salinity	DO	Saturation	
			C	ppt	ppm	%	
		Site 1 - OM	17.6	7.2	17.6	192.5%	
		Site 1 - 1M	17.3	7.4	17.3	188.3%	
		Site 1 - 2M	17.2	7.8	17.2	187.4%	
		Site 1 - 3M	17.2	7.8	17.2	187.3%	
		Site 2 - 0M	17.6	29.4	7.7	95.6%	
		Site 2 - 1M	17.5	29.4	7.6	95.3%	
		Site 2 - 2M	17.5	29.5	7.5	94.0%	
		Site 2 - 3M	17.4	29.6	7.3	90.9%	
		Site 3 - 0M	17.6	29.4	7.2	90.5%	
		Site 3 - 1M	17.5	29.5	7.5	94.1%	
		Site 3 - 2M	17.9	29.8	7.2	90.1%	
		Site 3 - 3M	17.5	29.9	7.7	96.1%	
		Site 4 - 0M	19.1	29.4	5.9	76.0%	
		Site 4 - 1M	19.0	29.4	6.0	76.6%	
		Site 4 - 2M					
		Site 5 - 0M	19.3	11.7	3.8	44.2%	
		Site 5 - 1M					
		Site 6 - 0M	17.5	0.4	3.4	35.1%	

SPRUCE CREEK ASSOCIATION - Water Quality Data							
Date	07/24/07						
Time	1224						
Monitors	Paula & Ron Ledgett						
Weather Comments	Overcast, clearing						
Cloud Cover	Partly cloudy						
Wind Conditions	Breezy						
Wind Direction	S						
Waves	Small waves						
Tide	Low - 13:11 +2.0						
RESULTS	Time		OM	1M	2M	3M	Comments
Site 1: Bond Rd	1314	DO (mg/L)	8.5	8.1	8.2	8.2	
		Conductivity (us/cm)	41.7	40.3	40.0	39.7	
		Spec Cond (ms/cm)	45.7	45.7	45.7	45.8	
		Salinity (ppt)	29.6	29.7	29.7	29.6	
		Temp (oC)	20.5	18.8	18.5	18.2	
Site 2: Eagle Pt	1300	DO (mg/L)	8.0	7.8	7.9	8.0	Protected from breeze in lee of Eagle Point.
		Conductivity (us/cm)	41.4	41.3	41.1	41.0	
		Spec Cond (ms/cm)	45.9	45.9	45.8	45.8	
		Salinity (ppt)	29.7	29.8	29.8	29.8	
		Temp (oC)	19.9	19.8	19.7	19.6	
Site 3: Moffat's Dock	1250	DO (mg/L)	7.9	7.9	8.1		
		Conductivity (us/cm)	41.7	41.7	41.3		
		Spec Cond (ms/cm)	45.8	45.9	45.8		
		Salinity (ppt)	29.8	29.8	29.7		
		Temp (oC)	20.3	20.3	19.9		
Site 4: Trading Post	1400	DO (mg/L)	8.5	7.9			Herring bait on tide flat - a dozen fish. Breezy from south.
		Conductivity (us/cm)	42.3	42.3			
		Spec Cond (ms/cm)	43.2	43.7			
		Salinity (ppt)	27.8	28.3			
		Temp (oC)	23.9	23.1			
Site 5: Picott Rd	1345	DO (mg/L)	9.6				Slight outward flow - some green algae.
		Conductivity (us/cm)	30.2				
		Spec Cond (ms/cm)	29.4				
		Salinity (ppt)	18.1				
		Temp (oC)	26.3				
Site 6: Wilson Rd	1328	DO (mg/L)	12.6				Green algae, filled. Outward flow. Probe touching bottom - water flow through probe.
		Conductivity (us/cm) ?					
		Spec Cond (ms/cm) ?					
		Salinity (ppt)	0.4				
		Temp (oC)	22.2				
Repeat Site: 2	1300	DO (mg/L)	7.9	7.8	7.9	7.9	
		Conductivity (us/cm)	41.4	41.2	41.2	40.8	
		Spec Cond (ms/cm)	45.9	45.8	45.8	45.9	
		Salinity (ppt)	29.8	29.8	29.7	29.7	
		Temp (oC)	19.9	19.8	19.7	19.3	
Entered by	PMF						
Proofed by	PL						
			Temp	Salinity	DO	Saturation	
			C	ppt	ppm	%	
		Site 1 - OM	20.5	8.5	20.5	239.4%	
		Site 1 - 1M	18.8	8.1	18.8	211.8%	
		Site 1 - 2M	18.5	8.2	18.5	207.3%	
		Site 1 - 3M	18.2	8.2	18.2	202.7%	
		Site 2 - OM	19.9	29.7	8.0	104.6%	
		Site 2 - 1M	19.8	29.8	7.8	101.9%	
		Site 2 - 2M	19.7	29.8	7.9	103.0%	
		Site 2 - 3M	19.6	29.8	8.0	104.1%	
		Site 3 - OM	20.3	29.8	7.9	104.2%	
		Site 3 - 1M	20.3	29.8	7.9	104.2%	
		Site 3 - 2M	19.9	29.7	8.1	105.9%	
		Site 3 - 3M					
		Site 4 - OM	23.9	27.8	8.5	118.2%	
		Site 4 - 1M	23.1	28.3	7.9	108.6%	
		Site 4 - 2M					
		Site 5 - OM	26.3	18.1	9.6	131.7%	
		Site 5 - 1M					
		Site 6 - OM	22.2	0.4	12.6	145.0%	

SPRUCE CREEK ASSOCIATION - Water Quality Data							
Date	08/07/07						
Time	0635						
Monitors	Marge Pelletier, Ann Grinnell (Phyllis Ford for sites 1-3)						
Weather Comments	Overcast, foggy, 67o						
Cloud Cover	Fog/Haze						
Wind Conditions	Calm						
Wind Direction	-						
Waves	Calm						
Tide	High - 06:20 +8.3						
RESULTS	Time		OM	1M	2M	3M	Comments
Site 1: Bond Rd	0705	DO (mg/L)	7.8	8.4	8.5	8.7	
		Conductivity (us/cm)	40.2	40.0	39.9	39.8	
		Spec Cond (ms/cm)	47.2	47.4	47.5	47.6	
		Salinity (ppt)	30.8	30.9	30.9	31.0	
		Temp (oC)	17.3	16.9	16.6	16.5	
Site 2: Eagle Pt	0650	DO (mg/L)	8.1	8.3	8.4	8.5	Grass and scum on water. Tide outbound.
		Conductivity (us/cm)	40.1	40.1	40.0	40.1	
		Spec Cond (ms/cm)	47.0	47.1	47.3	47.3	
		Salinity (ppt)	30.6	30.7	30.8	30.8	
		Temp (oC)	17.3	17.2	17.0	17.0	
Site 3: Moffat's Dock	0635	DO (mg/L)	7.9	7.4	8.1	8.4	
		Conductivity (us/cm)	40.2	40.2	40.1	40.0	
		Spec Cond (ms/cm)	46.8	47.0	47.2	47.4	
		Salinity (ppt)	30.4	30.6	30.7	30.9	
		Temp (oC)	17.8	17.4	17.1	16.9	
Site 4: Trading Post	0755	DO (mg/L)	6.4	6.5			Scum on water.
		Conductivity (us/cm)	40.1	40.2			
		Spec Cond (ms/cm)	45.5	45.6			
		Salinity (ppt)	29.5	29.6			
		Temp (oC)	18.8	18.7			
Site 5: Picott Rd	0740	DO (mg/L)	4.5				
		Conductivity (us/cm)	36.0				
		Spec Cond (ms/cm)	40.0				
		Salinity (ppt)	25.6				
		Temp (oC)	19.9				
Site 6: Wilson Rd	0730	DO (mg/L)	14.1				Tide going out. Did double check these numbers as they seem so off.
		Conductivity (us/cm)	7.7				
		Spec Cond (ms/cm)	8.5				
		Salinity (ppt)	4.8				
		Temp (oC)	19.9				
Repeat Site: 1	0705	DO (mg/L)	8.2	8.4	8.6	8.7	
		Conductivity (us/cm)	40.2	39.9	40.0	39.7	
		Spec Cond (ms/cm)	47.2	47.5	47.5	47.6	
		Salinity (ppt)	30.8	30.9	31.0	31.0	
		Temp (oC)	17.2	16.6	16.6	16.3	
Entered by	PMF						
Proofed by	PL						
			Temp	Salinity	DO	Saturation	
			C	ppt	ppm	%	
		Site 1 - OM	17.3	7.8	17.3	188.8%	
		Site 1 - 1M	16.9	8.4	16.9	183.6%	
		Site 1 - 2M	16.6	8.5	16.6	179.3%	
		Site 1 - 3M	16.5	8.7	16.5	178.1%	
		Site 2 - OM	17.3	30.6	8.1	101.4%	
		Site 2 - 1M	17.2	30.7	8.3	103.8%	
		Site 2 - 2M	17.0	30.8	8.4	104.7%	
		Site 2 - 3M	17.0	30.8	8.5	105.9%	
		Site 3 - OM	17.8	30.4	7.9	99.7%	
		Site 3 - 1M	17.4	30.6	7.4	92.8%	
		Site 3 - 2M	17.1	30.7	8.1	101.1%	
		Site 3 - 3M	16.9	30.9	8.4	104.5%	
		Site 4 - OM	18.8	29.5	6.4	81.9%	
		Site 4 - 1M	18.7	29.6	6.5	83.1%	
		Site 4 - 2M					
		Site 5 - OM	19.9	25.6	4.5	57.5%	
		Site 5 - 1M					
		Site 6 - OM	19.9	4.8	14.1	159.2%	

SPRUCE CREEK ASSOCIATION - Water Quality Data							
Date	08/07/07						
Time	1140						
Monitors	Will Brewster (Marilyn was stuck in traffic)						
Weather Comments	Very foggy						
Cloud Cover	Fog/Haze						
Wind Conditions	Slight breeze						
Wind Direction	SW						
Waves	Ripples						
Tide	Low - 12:26 +0.8						
RESULTS	Time		OM	1M	2M	3M	Comments
Site 1: Bond Rd		DO (mg/L)	7.6	7.6	7.6	7.2	One person can do this, it just takes 1/2 hour longer...
		Conductivity (us/cm)	42.1	41.7	40.8	40.7	
		Spec Cond (ms/cm)	49.2	47.2	47.3	47.2	
		Salinity (ppt)	30.7	30.7	30.8	30.8	
		Temp (oC)	19.5	18.9	17.9	17.8	
Site 2: Eagle Pt		DO (mg/L)	7.3	7.5	7.4	7.4	
		Conductivity (us/cm)	41.9	41.7	41.5	41.2	
		Spec Cond (ms/cm)	46.5	46.6	46.7	46.7	
		Salinity (ppt)	30.3	30.3	30.4	30.4	
		Temp (oC)	19.9	19.5	19.1	18.9	
Site 3: Moffat's Dock		DO (mg/L)	7.0	7.2	7.5		
		Conductivity (us/cm)	42.5	42.4	42.2		
		Spec Cond (ms/cm)	46.0	46.1	46.1		
		Salinity (ppt)	29.9	29.9	30.0		
		Temp (oC)	21.0	20.9	20.6		
Site 4: Trading Post	1348	DO (mg/L)	7.0				
		Conductivity (us/cm)	41.3				
		Spec Cond (ms/cm)	40.7				
		Salinity (ppt)	26.0				
		Temp (oC)	25.8				
Site 5: Picott Rd	1408	DO (mg/L)	7.8				
		Conductivity (us/cm)	16.8				
		Spec Cond (ms/cm)	15.6				
		Salinity (ppt)	9.1				
		Temp (oC)	25.4				
Site 6: Wilson Rd	1418	DO (mg/L)	11.2				
		Conductivity (us/cm)	13.4				
		Spec Cond (ms/cm)	13.6				
		Salinity (ppt)	0.7				
		Temp (oC)	25.5				
Repeat Site: 1		DO (mg/L)	7.7	7.5	7.5	7.2	
		Conductivity (us/cm)	41.9	41.7	41.2	40.7	
		Spec Cond (ms/cm)	47.2	47.2	47.2	47.2	
		Salinity (ppt)	30.8	30.8	30.7	30.8	
		Temp (oC)	19.2	19.0	18.3	17.8	
Entered by	PMF						
Proofed by	PL						
			Temp	Salinity	DO	Saturation	
			C	ppt	ppm	%	
		Site 1 - OM	19.5	7.6	19.5	222.1%	
		Site 1 - 1M	18.9	7.6	18.9	212.7%	
		Site 1 - 2M	17.9	7.6	17.9	197.5%	
		Site 1 - 3M	17.8	7.2	17.8	195.5%	
		Site 2 - 0M	19.9	30.3	7.3	95.8%	
		Site 2 - 1M	19.5	30.3	7.5	97.7%	
		Site 2 - 2M	19.1	30.4	7.4	95.8%	
		Site 2 - 3M	18.9	30.4	7.4	95.4%	
		Site 3 - 0M	21.0	29.9	7.0	93.5%	
		Site 3 - 1M	20.9	29.9	7.2	96.0%	
		Site 3 - 2M	20.6	30.0	7.5	99.5%	
		Site 3 - 3M					
		Site 4 - 0M	25.8	26.0	7.0	99.6%	
		Site 4 - 1M					
		Site 4 - 2M					
		Site 5 - 0M	25.4	9.1	7.8	100.1%	
		Site 5 - 1M					
		Site 6 - 0M	25.5	0.7	11.2	137.3%	

SPRUCE CREEK ASSOCIATION - Water Quality Data							
Date	08.20.07						
Time	0945						
Monitors	Dick Loehr & Barbara Diefendorf						
Weather Comments	Clear sky, light wind, 65o						
Cloud Cover	None						
Wind Conditions	Slight breeze						
Wind Direction	E						
Waves	Ripples						
Tide	Low - 10:40 +1.7						
RESULTS	Time		OM	1M	2M	3M	Comments
Site 1: Bond Rd	1055	DO (mg/L)	7.4	7.4	7.6	7.8	Freshening breeze
		Conductivity (us/cm)	39.9	39.4	39.0	39.0	
		Spec Cond (ms/cm)	47.7	47.5	47.6	47.6	
		Salinity (ppt)	31.0	31.0	31.0	31.0	
		Temp (oC)	17.1	16.4	15.6	15.7	
Site 2: Eagle Pt	1045	DO (mg/L)	8.1	7.5	7.2	7.0	2 herons
		Conductivity (us/cm)	40.2	40.1	39.8	39.8	
		Spec Cond (ms/cm)	47.2	47.5	47.6	47.7	
		Salinity (ppt)	30.9	31.0	31.0	31.0	
		Temp (oC)	17.0	16.8	16.6	16.4	
Site 3: Moffat's Dock	1030	DO (mg/L)	7.0	6.9			East wind with ripples
		Conductivity (us/cm)	40.3	40.2			
		Spec Cond (ms/cm)	47.4	47.5			
		Salinity (ppt)	30.9	30.9			
		Temp (oC)	17.2	17.1			
Site 4: Trading Post	1125	DO (mg/L)	7.0				Murky water!
		Conductivity (us/cm)	40.9				
		Spec Cond (ms/cm)	45.7				
		Salinity (ppt)	29.7				
		Temp (oC)	19.6				
Site 5: Picott Rd	1155	DO (mg/L)	8.3				
		Conductivity (us/cm)	35.7				
		Spec Cond (ms/cm)	37.6				
		Salinity (ppt)	23.9				
		Temp (oC)	22.4				
Site 6: Wilson Rd	1140	DO (mg/L)	7.5				Neighbor came to say that the site here was dump site and has mercury and other waste. Very shallow; readings may be innacurate because so little water.
		Conductivity (us/cm)	112.6				
		Spec Cond (ms/cm)	121.3				
		Salinity (ppt)	0.1				
		Temp (oC)	20.6				
Repeat Site: 3	1030	DO (mg/L)	7.0	6.9			
		Conductivity (us/cm)	40.3	40.3			
		Spec Cond (ms/cm)	47.5	47.5			
		Salinity (ppt)	30.9	30.9			
		Temp (oC)	17.1	17.1			
Entered by	PMF						
Proofed by	CH						
			Temp	Salinity	DO	Saturation	
			C	ppt	ppm	%	
		Site 1 - OM	17.1	7.4	17.1	185.4%	
		Site 1 - 1M	16.4	7.4	16.4	175.3%	
		Site 1 - 2M	15.6	7.6	15.6	164.2%	
		Site 1 - 3M	15.7	7.8	15.7	165.8%	
		Site 2 - OM	17.0	30.9	8.1	101.0%	
		Site 2 - 1M	16.8	31.0	7.5	93.2%	
		Site 2 - 2M	16.6	31.0	7.2	88.5%	
		Site 2 - 3M	16.4	31.0	7.0	86.6%	
		Site 3 - OM	17.2	30.9	7.0	88.1%	
		Site 3 - 1M	17.1	30.9	6.9	86.2%	
		Site 3 - 2M					
		Site 3 - 3M					
		Site 4 - OM	19.6	29.7	7.0	91.2%	
		Site 4 - 1M					
		Site 4 - 2M					
		Site 5 - OM	22.4	23.9	8.3	110.3%	
		Site 5 - 1M					
		Site 6 - OM	20.6	0.1	7.5	83.2%	

SPRUCE CREEK ASSOCIATION - Water Quality Data							
Date	08.21.07						
Time	1630						
Monitors	Steve Hall & Sue Cobler						
Weather Comments	Clouds & sun, 72o, hasn't rained for a couple of days						
Cloud Cover	Partly cloudy						
Wind Conditions	Breezy						
Wind Direction	South						
Waves	Ripples						
Tide	High - 1741 +8.2						
RESULTS	Time		OM	1M	2M	3M	Comments
Site 1: Bond Rd	1756	DO (mg/L)	7.6	7.9	7.5	7.5	
		Conductivity (us/cm)	39.5	39.4	39.3	39.3	
		Spec Cond (ms/cm)	48.1	48.1	48.2	48.2	
		Salinity (ppt)	31.4	31.4	31.4	31.5	
		Temp (oC)	15.6	15.5	15.4	15.3	
Site 2: Eagle Pt	1745	DO (mg/L)	7.1	7.6	6.8	6.2	Water still. Slight breeze.
		Conductivity (us/cm)	40.5	39.8	39.6	39.6	
		Spec Cond (ms/cm)	47.9	47.9	47.9	48.0	
		Salinity (ppt)	31.2	31.2	31.3	31.3	
		Temp (oC)	16.9	16.0	15.9	15.8	
Site 3: Moffat's Dock	1734	DO (mg/L)	7.9	7.7	7.6	7.6	
		Conductivity (us/cm)	41.8	40.9	40.4	39.7	
		Spec Cond (ms/cm)	47.9	47.9	47.9	48.0	
		Salinity (ppt)	31.2	31.3	31.3	31.3	
		Temp (oC)	18.3	17.3	16.8	16.0	
Site 4: Trading Post	1822	DO (mg/L)	8.1	8.0	8.0		Tide going out. 3rd reading taken at 1-3/4 meters.
		Conductivity (us/cm)	43.1	43.2	43.2		
		Spec Cond (ms/cm)	47.8	47.9	47.8		
		Salinity (ppt)	31.3	31.2	31.2		
		Temp (oC)	19.9	19.9	19.9		
Site 5: Picott Rd	1836	DO (mg/L)	7.1	7.3			Tide coming in. It switched while we were there. Tide going out at 6:44 pm. 1M measurement was actually at 1/2 meter.
		Conductivity (us/cm)	43.9	44.0			
		Spec Cond (ms/cm)	47.1	47.4			
		Salinity (ppt)	30.9	30.9			
		Temp (oC)	21.1	21.2			
Site 6: Wilson Rd	1850	DO (mg/L)	15.5				Tide coming in. Meter keeps going to "range" and readings were way out of range. Wilson Rd readings were not recorded because meter was erratic.
		Conductivity (us/cm)					
		Spec Cond (ms/cm)					
		Salinity (ppt)					
		Temp (oC)					
Repeat Site:	1836	DO (mg/L)	7.7	7.5			2nd measurement taken at 1/2 meter.
		Conductivity (us/cm)	43.3	44.0			
		Spec Cond (ms/cm)	46.6	47.2			
		Salinity (ppt)	30.7	30.9			
		Temp (oC)	21.3	21.2			
Entered by	PMF						
Proofed by	CH						
			Temp	Salinity	DO	Saturation	
			C	ppt	ppm	%	
		Site 1 - OM	15.6	7.6	15.6	164.2%	
		Site 1 - 1M	15.5	7.9	15.5	163.1%	
		Site 1 - 2M	15.4	7.5	15.4	161.3%	
		Site 1 - 3M	15.3	7.5	15.3	159.9%	
		Site 2 - OM	16.9	31.2	7.1	88.5%	
		Site 2 - 1M	16.0	31.2	7.6	93.1%	
		Site 2 - 2M	15.9	31.3	6.8	83.2%	
		Site 2 - 3M	15.8	31.3	6.2	75.7%	
		Site 3 - OM	18.3	31.2	7.9	101.2%	
		Site 3 - 1M	17.3	31.3	7.7	96.8%	
		Site 3 - 2M	16.8	31.3	7.6	94.6%	
		Site 3 - 3M	16.0	31.3	7.6	93.2%	
		Site 4 - OM	19.9	31.3	8.1	107.0%	
		Site 4 - 1M	19.9	31.2	8.0	105.6%	
		Site 4 - 2M	19.9	31.2	8.0	105.6%	
		Site 5 - OM	21.1	30.9	7.1	95.6%	
		Site 5 - 1M	21.2	30.9	7.3	98.5%	
		Site 6 - OM					