

## **SPRUCE CREEK WATER QUALITY ASSESSMENT**

**June 1 through September 27, 2005**

<http://www.sprucecreekassociation.org/monitoring.html>

### **READINGS**

Tidal water is classified as SA, SB, SC from best to worse. Spruce Creek is classified as SB (tidal sections) and B (non-tidal sections). In terms of DO, the minimum standard for SB is 85% saturation at any time. The minimum standard for B is 75% saturation or 7 mg/l whichever is greater.

The oxygen holding capacity of water is a function of temperature and salinity. It is possible for water to hold >100% capacity when the input of oxygen from algae or plants is greater than the transfer of oxygen to the air.

### **SITES**

Site 1 = Bond Road by Spruce & Barbers Creeks

Site 2 = Eagle Point in Admiralty Village

Site 3 = Above Roger's Park

Site 4 = Trading Post

Site 5 = Picot Road

Site 6 = Wilson Road/Route 101

### **Sponsors/Reviewers**

Malcom Burson

Maine Department of Environmental Protection

17 State House Station

Augusta, Me. 04333-0017

[Malcolm.c.burson@maine.gov](mailto:Malcolm.c.burson@maine.gov)

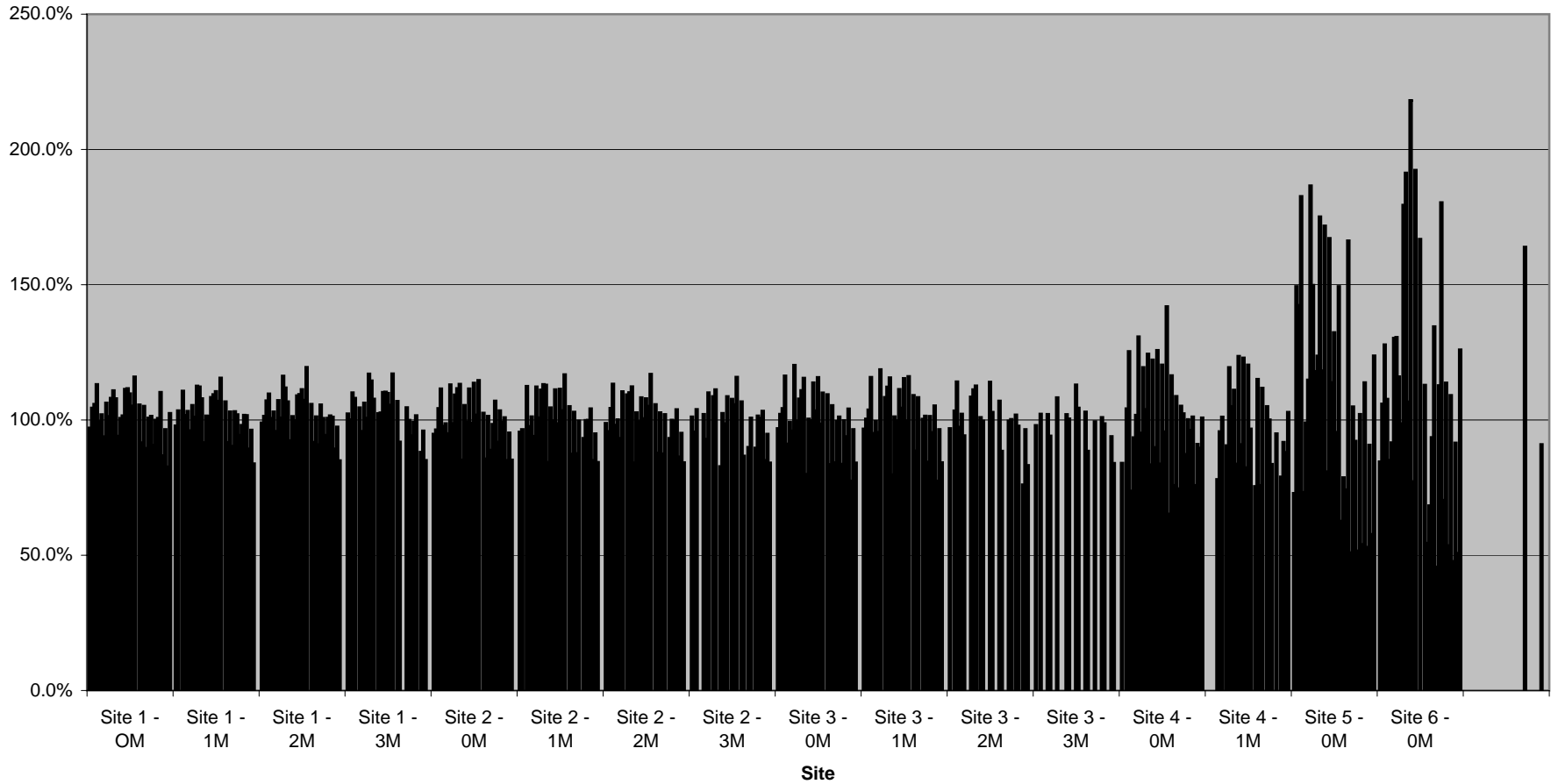
Phone (207) 287-7755

Fax (207) 287-2814

Dave Miller

[Dave.B.Miller@maine.gov](mailto:Dave.B.Miller@maine.gov)

### Spruce Creek Water Quality Assessment % DO Saturation (Summer 2005)



06.01.05 am h	06.01.05 pm l	06.07.05 am h	06.07.05 pm l	06.14.05 am l	06.14.05 pm h	06.21.05 am h	06.21.05 pm l	06.28.05 am l
06.28.05 pm h	07.05.05 am h	07.05.05 pm l	07.12.05 am l	07.12.05 pm h	07.19.05 am h	07.19.05 pm l	07.26.05 am l	07.26.05 pm h
08.02.05 am h	08.02.05 pm l	08.09.05 am l	08.09.05 pm h	08.16.05 am h	08.16.05 pm l	08.23.05 am l	08.23.05 pm h	08.30.05 am l
09.06.05 am l	09.06.05 pm h	09.13.05 am h	09.13.05 pm l	09.20.05 am l	09.20.05 pm h	09.27.05 am h	09.27.05 pm l	

**SPRUCE CREEK ASSOCIATION - Water Quality Data**

<b>Date</b>	06/01/05						
<b>Time</b>	0630						
<b>Monitors</b>	Whole team & Paul Mitnik for 4, 5 & 6 / PM PL SB JR for 1, 2 & 3						
<b>Weather Comments</b>	Lots of rain lately						
<b>Cloud Cover</b>	Overcast						
<b>Wind Conditions</b>	Slight Breeze						
<b>Wind Direction</b>	SW						
<b>Waves</b>	Ripples						
<b>Tide</b>	High - 07:10 / 8.99 ft						
<b>RESULTS</b>	<b>Time</b>		<b>OM</b>	<b>1M</b>	<b>2M</b>	<b>3M</b>	<b>Comments</b>
Site 1: Bond Rd	0835	DO (ppm)	9.3	9.4	9.5	9.8	
		Temp (oC)	11.8	11.6	11.6	11.3	
		Salinity (ppt)	19.5	19.8	19.9	21.3	
Site 2: Eagle Pt	0820	DO (ppm)	9.1	9.2	9.5	9.7	
		Temp (oC)	11.7	11.5	11.5	11.4	
		Salinity (ppt)	19.6	19.8	20.0	20.8	
Site 3: Moffat's Dock	0810	DO (ppm)	9.3	9.3	9.3	9.4	
		Temp (oC)	11.7	11.6	11.5	11.4	
		Salinity (ppt)	19.5	19.6	20.2	20.7	
Site 4: Trading Post	0653	DO (ppm)	8.1				
		Temp (oC)	11.9				
		Salinity (ppt)	18.3				
Site 5: Picott Rd	0710	DO (ppm)	7.3				Good flow
		Temp (oC)	13.0				
		Salinity (ppt)	8.3				
Site 6: Wilson Rd	0719	DO (ppm)	9.2				Tide still coming in
		Temp (oC)	11.6				
		Salinity (ppt)	0.1				
Repeat Site: 1	0840	DO (ppm)	9.4	9.4	9.5	9.7	
		Temp (oC)	11.8	11.6	11.6	11.4	
		Salinity (ppt)	19.5	19.8	20.0	20.8	
<b>Entered by</b>	PM						
<b>Proofed by</b>	PL						
			<b>Temp</b>	<b>Salinity</b>	<b>DO</b>	<b>Saturation</b>	
			<b>C</b>	<b>ppt</b>	<b>ppm</b>	<b>%</b>	
		Site 1 - OM	11.8	19.5	9.3	97.1%	
		Site 1 - 1M	11.6	19.8	9.4	97.9%	
		Site 1 - 2M	11.6	19.9	9.5	99.0%	
		Site 1 - 3M	11.3	21.3	9.8	102.4%	
		Site 2 - OM	11.7	19.6	9.1	94.9%	
		Site 2 - 1M	11.5	19.8	9.2	95.6%	
		Site 2 - 2M	11.5	20.0	9.5	98.9%	
		Site 2 - 3M	11.4	20.8	9.7	101.2%	
		Site 3 - OM	11.7	19.5	9.3	96.9%	
		Site 3 - 1M	11.6	19.6	9.3	96.8%	
		Site 3 - 2M	11.5	20.2	9.3	96.9%	
		Site 3 - 3M	11.4	20.7	9.4	98.1%	
		Site 4 - OM	11.9	18.3	8.1	84.1%	
		Site 4 - 1M					
		Site 5 - OM	13.0	8.3	7.3	73.0%	
		Site 6 - OM	11.6	0.1	9.2	84.6%	

**SPRUCE CREEK ASSOCIATION - Water Quality Data**

<b>Date</b>	06/01/05						
<b>Time</b>	1245						
<b>Monitors</b>	PM PL SH						
<b>Weather Comments</b>	Lots of rain lately; water more brown than usual						
<b>Cloud Cover</b>	Partly Cloudy						
<b>Wind Conditions</b>	Slight Breeze						
<b>Wind Direction</b>	SW						
<b>Waves</b>	Ripples						
<b>Tide</b>	Low - 13:32 / 0.34 ft						
<b>RESULTS</b>	<b>Time</b>		<b>OM</b>	<b>1M</b>	<b>2M</b>	<b>3M</b>	<b>Comments</b>
Site 1: Bond Rd	1340	DO (ppm)	8.9	8.9	8.8	8.7	At 1M can't see too well (water brown) 4th measurement taken at only 2.5M
		Temp (oC)	13.8	13.3	12.9	12.8	
		Salinity (ppt)	31.5	31.6	31.6	31.7	
Site 2: Eagle Pt	1320	DO (ppm)	8.3	8.4	8.4	8.4	No breeze at this site; At 1M can't see too well 4th measurement taken at only 2.25M
		Temp (oC)	13.7	13.1	12.6	12.5	
		Salinity (ppt)	30.2	30.4	30.9	31.0	
Site 3: Moffat's Dock	1306	DO (ppm)	8.7	8.6			Water brown 2nd measurement taken at only .5M
		Temp (oC)	14.8	14.5			
		Salinity (ppt)	28.3	28.4			
Site 4: Trading Post	1439	DO (ppm)					Floats not out yet so water too low; no readings taken
		Temp (oC)					
		Salinity (ppt)					
Site 5: Picott Rd	1425	DO (ppm)	14.6				Some flow (strong to medium); Water clear
		Temp (oC)	16.4				
		Salinity (ppt)	0.3				
Site 6: Wilson Rd	1415	DO (ppm)	10.5				Strong flow out
		Temp (oC)	15.8				
		Salinity (ppt)	0.1				
Repeat Site: 2	1325	DO (ppm)	8.3	8.4	8.5		Boat shifted position by second set so couldn't re-measure at 3M
		Temp (oC)	13.7	13.2	12.7		
		Salinity (ppt)	30.1	30.4	30.7		
<b>Entered by</b>	PM						
<b>Proofed by</b>	PL						
			Temp	Salinity	DO	Saturation	
			C	ppt	ppm	%	
		Site 1 - OM	13.8	31.5	8.9	104.5%	
		Site 1 - 1M	13.3	31.6	8.9	103.5%	
		Site 1 - 2M	12.9	31.6	8.8	101.5%	
		Site 1 - 3M	12.8	31.7	8.7	100.2%	
		Site 2 - OM	13.7	30.2	8.3	96.5%	
		Site 2 - 1M	13.1	30.4	8.4	96.6%	
		Site 2 - 2M	12.6	30.9	8.4	95.9%	
		Site 2 - 3M	12.5	31.0	8.4	95.7%	
		Site 3 - OM	14.8	28.3	8.7	102.2%	
		Site 3 - 1M	14.5	28.4	8.6	100.5%	
		Site 3 - 2M					
		Site 3 - 3M					
		Site 4 - OM					
		Site 4 - 1M					
		Site 5 - OM	16.4	0.3	14.6	149.4%	
		Site 6 - OM	15.8	0.1	10.5	106.0%	

**SPRUCE CREEK ASSOCIATION - Water Quality Data**

<b>Date</b>	06/07/05						
<b>Time</b>	1100						
<b>Monitors</b>	JR LA						
<b>Weather Comments</b>	Hot & humid, partly cloudy						
<b>Cloud Cover</b>	None						
<b>Wind Conditions</b>	Slight Breeze						
<b>Wind Direction</b>	SE						
<b>Waves</b>	Ripples						
<b>Tide</b>	High - 12:26 / 8.49 ft						
<b>RESULTS</b>	<b>Time</b>		<b>OM</b>	<b>1M</b>	<b>2M</b>	<b>3M</b>	<b>Comments</b>
Site 1: Bond Rd	1146	DO (ppm)	9.4		9.6	9.9	- Missed 1M reading - Bright sun, no clouds, calm
		Temp (oC)	12.5		12.0	11.7	
		Salinity (ppt)	29.2		29.5	29.9	
Site 2: Eagle Pt	1152	DO (ppm)	9.0		9.3	9.3	- Missed 1M reading - Bright sun, no clouds, calm
		Temp (oC)	13.8		12.4	12.2	
		Salinity (ppt)	29.5		29.0	29.0	
Site 3: Moffat's Dock	1205	DO (ppm)	9.0	9.1	9.3	9.2	Now cloudy, breezy, ripples
		Temp (oC)	13.9	13.2	12.0	11.9	
		Salinity (ppt)	29.1	28.9	28.9	29.1	
Site 4: Trading Post	1220	DO (ppm)	8.7				Cloudy, calm
		Temp (oC)	15.1				
		Salinity (ppt)	30.5				
Site 5: Picott Rd	1230	DO (ppm)	10.8				Partial clouds, bright sun
		Temp (oC)	22.5				
		Salinity (ppt)	23.0				
Site 6: Wilson Rd	1238	DO (ppm)	11.5				Partial clouds, bright sun
		Temp (oC)	20.5				
		Salinity (ppt)	0.2				
Repeat Site: 6	1240	DO (ppm)	11.5				
		Temp (oC)	20.5				
		Salinity (ppt)	0.2				
<b>Entered by</b>	PM						
<b>Proofed by</b>	CH						
			Temp	Salinity	DO	Saturation	
			C	ppt	ppm	%	
		Site 1 - OM	12.5	29.2	9.4	105.9%	
		Site 1 - 1M					
		Site 1 - 2M	12.0	29.5	9.6	107.2%	
		Site 1 - 3M	11.7	29.9	9.9	110.2%	
		Site 2 - OM	13.8	29.5	9.0	104.4%	
		Site 2 - 1M					
		Site 2 - 2M	12.4	29.0	9.3	104.4%	
		Site 2 - 3M	12.2	29.0	9.3	104.0%	
		Site 3 - OM	13.9	29.1	9.0	104.3%	
		Site 3 - 1M	13.2	28.9	9.1	103.8%	
		Site 3 - 2M	12.0	28.9	9.3	103.5%	
		Site 3 - 3M	11.9	29.1	9.2	102.3%	
		Site 4 - OM	15.1	30.5	8.7	104.2%	
		Site 4 - 1M					
		Site 5 - OM	22.5	23.0	10.8	142.5%	
		Site 6 - OM	20.5	0.2	11.5	127.9%	

**SPRUCE CREEK ASSOCIATION - Water Quality Data**

<b>Date</b>	06/07/05						
<b>Time</b>	1725						
<b>Monitors</b>	PL ME						
<b>Weather Comments</b>	Heading to low tide						
<b>Cloud Cover</b>	Partly Cloudy						
<b>Wind Conditions</b>	Breezy						
<b>Wind Direction</b>	W						
<b>Waves</b>	Calm						
<b>Tide</b>	Low - 18:21 / 1.17 ft						
<b>RESULTS</b>	<b>Time</b>		<b>OM</b>	<b>1M</b>	<b>2M</b>	<b>3M</b>	<b>Comments</b>
Site 1: Bond Rd	1810	DO (ppm)	9.5	9.5	9.5	9.4	Slight breeze now, no ripples
		Temp (oC)	16.8	15.7	15.2	15.0	
		Salinity (ppt)	24.1	24.1	24.2	24.2	
Site 2: Eagle Pt	1758	DO (ppm)	9.4	9.5	9.6		Full 2 meters, 2nd reading
		Temp (oC)	16.6	16.5	16.3		
		Salinity (ppt)	24.1	24.1	24.2		
Site 3: Moffat's Dock	1747	DO (ppm)	9.8	9.9	9.8		Protected from west wind so calm, pine pollen on water 3rd reading at 1.5M
		Temp (oC)	16.5	15.7	15.5		
		Salinity (ppt)	24.5	24.7	24.7		
Site 4: Trading Post	1850	DO (ppm)	9.9				Oil on water
		Temp (oC)	21.3				
		Salinity (ppt)	19.8				
Site 5: Picott Rd	1845	DO (ppm)	15.0				Lots of green plant life - algae
		Temp (oC)	24.4				
		Salinity (ppt)	3.1				
Site 6: Wilson Rd	1830	DO (ppm)	9.2				
		Temp (oC)	23.2				
		Salinity (ppt)	0.2				
Repeat Site: 3	1747	DO (ppm)	9.7	9.9	9.8		
		Temp (oC)	16.5	15.6	15.4		
		Salinity (ppt)	24.4	24.6	24.6		
<b>Entered by</b>	PM						
<b>Proofed by</b>	CH						
			Temp	Salinity	DO	Saturation	
			C	ppt	ppm	%	
		Site 1 - OM	16.8	24.1	9.5	113.2%	
		Site 1 - 1M	15.7	24.1	9.5	110.8%	
		Site 1 - 2M	15.2	24.2	9.5	109.7%	
		Site 1 - 3M	15.0	24.2	9.4	108.1%	
		Site 2 - OM	16.6	24.1	9.4	111.6%	
		Site 2 - 1M	16.5	24.1	9.5	112.6%	
		Site 2 - 2M	16.3	24.2	9.6	113.4%	
		Site 2 - 3M					
		Site 3 - OM	16.5	24.5	9.8	116.4%	
		Site 3 - 1M	15.7	24.7	9.9	115.9%	
		Site 3 - 2M	15.5	24.7	9.8	114.2%	
		Site 3 - 3M					
		Site 4 - OM	21.3	19.8	9.9	125.4%	
		Site 4 - 1M					
		Site 5 - OM	24.4	3.1	15.0	182.7%	
		Site 6 - OM	23.2	0.2	9.2	107.8%	

**SPRUCE CREEK ASSOCIATION - Water Quality Data**

<b>Date</b>	06/14/05						
<b>Time</b>	0955						
<b>Monitors</b>	PM SB LA						
<b>Weather Comments</b>	Heading to low tide, 54o						
<b>Cloud Cover</b>	Cloudy, rainy (very much at the start, less as went on, been very hot for 3+ days)						
<b>Wind Conditions</b>	Breezy						
<b>Wind Direction</b>	NW						
<b>Waves</b>	Ripples						
<b>Tide</b>	Low - 11:05 / 1.16 ft						
<b>RESULTS</b>	<b>Time</b>		<b>OM</b>	<b>1M</b>	<b>2M</b>	<b>3M</b>	<b>Comments</b>
Site 1: Bond Rd	1037	DO (ppm)	8.6	8.7	8.6		Light rain
		Temp (oC)	15.2	15.3	15.3		
		Salinity (ppt)	24.5	26.0	26.1		
Site 2: Eagle Pt	1020	DO (ppm)	8.2	8.2	8.3		Light rain
		Temp (oC)	16.6	16.5	16.0		
		Salinity (ppt)	24.9	25.0	25.5		
Site 3: Moffat's Dock	1010	DO (ppm)	7.6	8.0	8.3		Light rain (after very heavy rain)
		Temp (oC)	17.0	16.3	15.5		
		Salinity (ppt)	24.6	25.4	25.9		
Site 4: Trading Post	1115	DO (ppm)	6.0	6.0			Green algae @ dock, overcast, no rain
		Temp (oC)	19.3	19.7			
		Salinity (ppt)	21.3	29.5			
Site 5: Picott Rd	1125	DO (ppm)	6.6				No rain
		Temp (oC)	20.3				
		Salinity (ppt)	0.7				
Site 6: Wilson Rd	1130	DO (ppm)	7.9				No rain
		Temp (oC)	19.0				
		Salinity (ppt)	0.1				
Repeat Site: 2	1125	DO (ppm)	8.3	8.2			Light rain (after very heavy rain)
		Temp (oC)	16.6	16.5			
		Salinity (ppt)	24.9	25.0			
<b>Entered by</b>	PM						
<b>Proofed by</b>							
			Temp	Salinity	DO	Saturation	
			C	ppt	ppm	%	
		Site 1 - OM	15.2	24.5	8.6	99.5%	
		Site 1 - 1M	15.3	26.0	8.7	101.8%	
		Site 1 - 2M	15.3	26.1	8.6	100.7%	
		Site 1 - 3M					
		Site 2 - OM	16.6	24.9	8.2	97.8%	
		Site 2 - 1M	16.5	25.0	8.2	97.7%	
		Site 2 - 2M	16.0	25.5	8.3	98.2%	
		Site 2 - 3M					
		Site 3 - OM	17.0	24.6	7.6	91.2%	
		Site 3 - 1M	16.3	25.4	8.0	95.2%	
		Site 3 - 2M	15.5	25.9	8.3	97.5%	
		Site 3 - 3M					
		Site 4 - OM	19.3	21.3	6.0	73.8%	
		Site 4 - 1M	19.7	29.5	6.0	78.1%	
		Site 5 - OM	20.3	0.7	6.6	73.3%	
		Site 6 - OM	19.0	0.1	7.9	85.2%	

**SPRUCE CREEK ASSOCIATION - Water Quality Data**

<b>Date</b>	06/14/05						
<b>Time</b>	1711						
<b>Monitors</b>	PL ME						
<b>Weather Comments</b>							
<b>Cloud Cover</b>	Intermittent rain						
<b>Wind Conditions</b>	Breezy						
<b>Wind Direction</b>	NE						
<b>Waves</b>	Ripples						
<b>Tide</b>	High - 17:17 / 8.03 ft						
<b>RESULTS</b>	<b>Time</b>		<b>OM</b>	<b>1M</b>	<b>2M</b>	<b>3M</b>	<b>Comments</b>
Site 1: Bond Rd	1731	DO (ppm)	8.9	9.0	9.0	9.2	No rain
		Temp (oC)	14.2	14.2	14.1	13.6	
		Salinity (ppt)	26.4	26.5	26.5	27.0	
Site 2: Eagle Pt	1720	DO (ppm)	8.5	8.8	8.7	8.9	NE wind breezier, no rain
		Temp (oC)	15.0	14.5	14.3	14.1	
		Salinity (ppt)	25.8	26.0	26.7	26.9	
Site 3: Moffat's Dock	1711	DO (ppm)	8.6	8.6	8.9	8.9	No rain
		Temp (oC)	14.7	14.8	14.2	14.1	
		Salinity (ppt)	25.7	25.9	26.7	26.9	
Site 4: Trading Post	1812	DO (ppm)	8.0	8.2			Float is in, green algae floating next to float, raining
		Temp (oC)	15.7	15.5			
		Salinity (ppt)	24.6	25.1			
Site 5: Picott Rd	1805	DO (ppm)	8.7				Raining hard, good flow, incoming
		Temp (oC)	18.4				
		Salinity (ppt)	11.2				
Site 6: Wilson Rd	1747	DO (ppm)	8.8				Raining hard
		Temp (oC)	17.3				
		Salinity (ppt)	0.1				
Repeat Site: 2	1720	DO (ppm)	8.6	8.7	8.9	8.9	NE wind breezier, no rain
		Temp (oC)	15.0	14.6	14.3	14.2	
		Salinity (ppt)	25.8	26.0	26.6	26.8	
<b>Entered by</b>	PM						
<b>Proofed by</b>	PL						
			Temp	Salinity	DO	Saturation	
			C	ppt	ppm	%	
		Site 1 - OM	14.2	26.4	8.9	102.1%	
		Site 1 - 1M	14.2	26.5	9.0	103.3%	
		Site 1 - 2M	14.1	26.5	9.0	103.1%	
		Site 1 - 3M	13.6	27.0	9.2	104.6%	
		Site 2 - OM	15.0	25.8	8.5	98.7%	
		Site 2 - 1M	14.5	26.0	8.8	101.3%	
		Site 2 - 2M	14.3	26.7	8.7	100.2%	
		Site 2 - 3M	14.1	26.9	8.9	102.2%	
		Site 3 - OM	14.7	25.7	8.6	99.2%	
		Site 3 - 1M	14.8	25.9	8.6	99.6%	
		Site 3 - 2M	14.2	26.7	8.9	102.3%	
		Site 3 - 3M	14.1	26.9	8.9	102.2%	
		Site 4 - OM	15.7	24.6	8.0	93.6%	
		Site 4 - 1M	15.5	25.1	8.2	95.8%	
		Site 5 - OM	18.4	11.2	8.7	99.1%	
		Site 6 - OM	17.3	0.1	8.8	91.7%	

**SPRUCE CREEK ASSOCIATION - Water Quality Data**

<b>Date</b>	06/21/05						
<b>Time</b>	1028						
<b>Monitors</b>	PM SH						
<b>Weather Comments</b>	Sunny, mild, partly cloudy/slightly hazy						
<b>Cloud Cover</b>	Partly cloudy						
<b>Wind Conditions</b>	Calm						
<b>Wind Direction</b>	-						
<b>Waves</b>	Calm						
<b>Tide</b>	High - 10:53 / 8.72 ft						
<b>RESULTS</b>	<b>Time</b>		<b>OM</b>	<b>1M</b>	<b>2M</b>	<b>3M</b>	<b>Comments</b>
Site 1: Bond Rd	1031	DO (ppm)	8.2	8.5	8.5	8.5	Used 25.5 salinity to calibrate
		Temp (oC)	14.6	13.8	13.6	13.6	
		Salinity (ppt)	24.8	25.5	25.7	25.7	
Site 2: Eagle Pt	1050	DO (ppm)	8.1	8.2	8.2	8.2	Refractometer = 28
		Temp (oC)	15.9	14.7	14.2	14.0	
		Salinity (ppt)	24.5	24.8	25.1	25.2	
Site 3: Moffat's Dock	1058	DO (ppm)	8.3	8.3	8.3	8.3	Used 24.2 salinity to calibrate Slight breeze (westerly) Refractometer = 27
		Temp (oC)	15.3	15.0	14.2	14.1	
		Salinity (ppt)	24.2	24.3	24.8	25.0	
Site 4: Trading Post	1158	DO (ppm)	8.3	8.4			Pollen & film on water Out-going tide, minnows in water Refractometer = 24
		Temp (oC)	18.5	17.3			
		Salinity (ppt)	23.4	24.2			
Site 5: Picott Rd	1140	DO (ppm)	9.2				Some breeze (westerly), Riffles on water against tide, some green algae at grass edge, Used 13.9 salinity, Refract=16
		Temp (oC)	22.3				
		Salinity (ppt)	14.2				
Site 6: Wilson Rd	1131	DO (ppm)	12.3				Incoming flow Refractometer=0.4
		Temp (oC)	18.1				
		Salinity (ppt)	0.2				
Repeat Site: 6	1131	DO (ppm)	12.4				
		Temp (oC)	18.1				
		Salinity (ppt)	0.2				
<b>Entered by</b>	PM						
<b>Proofed by</b>	PL						
			Temp	Salinity	DO	Saturation	
			C	ppt	ppm	%	
		Site 1 - OM	14.6	24.8	8.2	93.9%	
		Site 1 - 1M	13.8	25.5	8.5	96.2%	
		Site 1 - 2M	13.6	25.7	8.5	95.9%	
		Site 1 - 3M	13.6	25.7	8.5	95.9%	
		Site 2 - OM	15.9	24.5	8.1	95.1%	
		Site 2 - 1M	14.7	24.8	8.2	94.1%	
		Site 2 - 2M	14.2	25.1	8.2	93.3%	
		Site 2 - 3M	14.0	25.2	8.2	93.0%	
		Site 3 - OM	15.3	24.2	8.3	96.1%	
		Site 3 - 1M	15.0	24.3	8.3	95.5%	
		Site 3 - 2M	14.2	24.8	8.3	94.3%	
		Site 3 - 3M	14.1	25.0	8.3	94.2%	
		Site 4 - OM	18.5	23.4	8.3	101.8%	
		Site 4 - 1M	17.3	24.2	8.4	101.2%	
		Site 5 - OM	22.3	14.2	9.2	114.9%	
		Site 6 - OM	18.1	0.2	12.3	130.3%	

SPRUCE CREEK ASSOCIATION - Water Quality Data							
Date	06/21/05						
Time	1618						
Monitors	LA JR						
Weather Comments							
Cloud Cover	Partly Cloudy						
Wind Conditions	Calm						
Wind Direction							
Waves	Ripples						
Tide	Low - 16:51 / 0.55 ft						
RESULTS	Time		OM	1M	2M	3M	Comments
Site 1: Bond Rd	1618	DO (ppm)	8.8	8.8	8.9	8.9	Refractometer=30
		Temp (oC)	17.3	16.9	17.1	16.7	
		Salinity (ppt)	24.8	24.7	25.0	24.9	
Site 2: Eagle Pt	1625	DO (ppm)	9.1	9.1	9.0	9.0	Refractometer=30
		Temp (oC)	18.9	18.5	18.2	18.0	
		Salinity (ppt)	24.3	24.4	24.6	24.6	
Site 3: Moffat's Dock	1645	DO (ppm)	9.4	9.3			Refractometer - needs recalibration, but didn't have distilled water
		Temp (oC)	20.7	20.3			
		Salinity (ppt)	23.5	24.3			
Site 4: Trading Post	1722	DO (ppm)	9.9				
		Temp (oC)	23.5				
		Salinity (ppt)	20.2				
Site 5: Picott Rd	1730	DO (ppm)	15.3				Lots of algae today here + pollen
		Temp (oC)	24.7				
		Salinity (ppt)	2.4				
Site 6: Wilson Rd	1740	DO (ppm)	11.2				Algae & pollen
		Temp (oC)	23.0				
		Salinity (ppt)	0.1				
Repeat Site: 1	1700	DO (ppm)	8.9	8.9	9.0		
		Temp (oC)	17.8	17.4	17.4		
		Salinity (ppt)	24.5	24.5	24.7		
Entered by	PM						
Proofed by	PL						
			Temp	Salinity	DO	Saturation	
			C	ppt	ppm	%	
		Site 1 - OM	17.3	24.8	8.8	106.4%	
		Site 1 - 1M	16.9	24.7	8.8	105.5%	
		Site 1 - 2M	17.1	25.0	8.9	107.3%	
		Site 1 - 3M	16.7	24.9	8.9	106.4%	
		Site 2 - OM	18.9	24.3	9.1	113.1%	
		Site 2 - 1M	18.5	24.4	9.1	112.3%	
		Site 2 - 2M	18.2	24.6	9.0	110.6%	
		Site 2 - 3M	18.0	24.6	9.0	110.2%	
		Site 3 - OM	20.7	23.5	9.4	120.3%	
		Site 3 - 1M	20.3	24.3	9.3	118.7%	
		Site 3 - 2M					
		Site 3 - 3M					
		Site 4 - OM	23.5	20.2	9.9	130.8%	
		Site 4 - 1M					
		Site 5 - OM	24.7	2.4	15.3	186.7%	
		Site 6 - OM	23.0	0.1	11.2	130.6%	

**SPRUCE CREEK ASSOCIATION - Water Quality Data**

<b>Date</b>	06/28/05						
<b>Time</b>	1020						
<b>Monitors</b>	PL ME						
<b>Weather Comments</b>							
<b>Cloud Cover</b>	Fog/Haze						
<b>Wind Conditions</b>	Calm						
<b>Wind Direction</b>	None						
<b>Waves</b>	Calm						
<b>Tide</b>	Low - 11:07 / -0.21 ft						
<b>RESULTS</b>	<b>Time</b>		<b>OM</b>	<b>1M</b>	<b>2M</b>	<b>3M</b>	<b>Comments</b>
Site 1: Bond Rd	1050	DO (ppm)	8.4	8.45	8.46	8.45	Slight breeze E Refractometer = 30 at surface
		Temp (oC)	16.1	15.9	15.7	15.7	
		Salinity (ppt)	27.9	27.8	27.8	27.8	
Site 2: Eagle Pt	1045	DO (ppm)	8.02	8.24			Sun breaking through Refractometer = 28 at surface
		Temp (oC)	17.4	17.1			
		Salinity (ppt)	27.6	27.6			
Site 3: Moffat's Dock	1040	DO (ppm)	7.88				Sun breaking through, haze, tide very low Refractometer = 27 at surface
		Temp (oC)	19.1				
		Salinity (ppt)	26.8				
Site 4: Trading Post	1145	DO (ppm)	7.07	6.97			2nd measurement at .5M; East wind, ripples, partly cloudy (thin, high clouds), Refractometer = 25 at surface
		Temp (oC)	22.6	20.6			
		Salinity (ppt)	26.4	26.5			
Site 5: Picott Rd	1135	DO (ppm)	11.3				Warm sunny, barnacles on rocks, lots of green algae after culvert on sea side, pine pollen on edge
		Temp (oC)	26.2				
		Salinity (ppt)	12.4				
Site 6: Wilson Rd	1115	DO (ppm)	10.2				Sunny, warm, lots of long stringy green algae on rocks grow; Refractometer < 0 <1 but not perceptible to our eyes
		Temp (oC)	21.6				
		Salinity (ppt)	0.5				
Repeat Site: 1	1050	DO (ppm)	8.44	8.48	8.40	8.47	
		Temp (oC)	16.0	15.8	15.7	15.7	
		Salinity (ppt)	27.8	27.8	27.8	27.8	
<b>Entered by</b>	PM						
<b>Proofed by</b>	PL						
			Temp	Salinity	DO	Saturation	
			C	ppt	ppm	%	
		Site 1 - OM	16.1	27.9	8.4	101.4%	
		Site 1 - 1M	15.9	27.8	8.5	101.2%	
		Site 1 - 2M	15.7	27.8	8.5	100.9%	
		Site 1 - 3M	15.7	27.8	8.5	100.8%	
		Site 2 - OM	17.4	27.6	8.0	98.8%	
		Site 2 - 1M	17.1	27.6	8.2	100.9%	
		Site 2 - 2M					
		Site 2 - 3M					
		Site 3 - OM	19.1	26.8	7.9	99.8%	
		Site 3 - 1M					
		Site 3 - 2M					
		Site 3 - 3M					
		Site 4 - OM	22.6	26.4	7.1	95.3%	
		Site 4 - 1M	20.6	26.5	7.0	90.6%	
		Site 5 - OM	26.2	12.4	11.3	149.9%	
		Site 6 - OM	21.6	0.5	10.2	116.1%	

**SPRUCE CREEK ASSOCIATION - Water Quality Data**

<b>Date</b>	06/28/05						
<b>Time</b>	1630						
<b>Monitors</b>	SB GS						
<b>Weather Comments</b>							
<b>Cloud Cover</b>	Overcast, Fog/Haze						
<b>Wind Conditions</b>	Slight Breeze						
<b>Wind Direction</b>							
<b>Waves</b>	Calm, Ripples						
<b>Tide</b>	High - 17:22 / 9.50 ft						
<b>RESULTS</b>	<b>Time</b>		<b>OM</b>	<b>1M</b>	<b>2M</b>	<b>3M</b>	<b>Comments</b>
Site 1: Bond Rd	1720	DO (ppm)	9.0	9.5	9.9	10.0	Refractometer = 28 @ surface Conditions as below
		Temp (oC)	16.0	15.2	14.5	14.3	
		Salinity (ppt)	28.0	28.5	29.3	29.4	
Site 2: Eagle Pt	1713	DO (ppm)	9.0	9.2	9.2	9.2	Refractometer = 28 @ surface Conditions as below
		Temp (oC)	16.6	16.3	15.5	15.2	
		Salinity (ppt)	28.0	28.0	28.0	28.0	
Site 3: Moffat's Dock	1705	DO (ppm)	8.9	9.0	9.2	9.2	Refractometer = 27 @ surface Conditions as below
		Temp (oC)	16.6	16.3	15.3	15.0	
		Salinity (ppt)	27.5	27.5	27.4	28.0	
Site 4: Trading Post	1750	DO (ppm)	9.2	9.2			Refractometer = 27.5 @ surface Conditions as below
		Temp (oC)	20.2	20.2			
		Salinity (ppt)	27.6	27.6			
Site 5: Picott Rd	1802	DO (ppm)	8.4				Refractometer = 25 @ surface Scum on surface, light breeze, light raining incoming
		Temp (oC)	25.3				
		Salinity (ppt)	25.4				
Site 6: Wilson Rd	1810	DO (ppm)	7.4				Refractometer = 6 @ surface Scum on surface, light breeze, light raining incoming
		Temp (oC)	27.7				
		Salinity (ppt)	8.8				
Repeat Site: 1	1720	DO (ppm)	9.5	9.7	10.0	10.1	
		Temp (oC)	15.8	15.0	14.4	14.3	
		Salinity (ppt)	28.0	28.6	29.3	29.4	
<b>Entered by</b>	PM						
<b>Proofed by</b>	PL						
			<b>Temp</b>	<b>Salinity</b>	<b>DO</b>	<b>Saturation</b>	
			<b>C</b>	<b>ppt</b>	<b>ppm</b>	<b>%</b>	
		Site 1 - OM	16.0	28.0	9.0	108.1%	
		Site 1 - 1M	15.2	28.5	9.5	112.7%	
		Site 1 - 2M	14.5	29.3	9.9	116.3%	
		Site 1 - 3M	14.3	29.4	10.0	117.1%	
		Site 2 - OM	16.6	28.0	9.0	109.4%	
		Site 2 - 1M	16.3	28.0	9.2	111.2%	
		Site 2 - 2M	15.5	28.0	9.2	109.4%	
		Site 2 - 3M	15.2	28.0	9.2	108.8%	
		Site 3 - OM	16.6	27.5	8.9	107.9%	
		Site 3 - 1M	16.3	27.5	9.0	108.4%	
		Site 3 - 2M	15.3	27.4	9.2	108.6%	
		Site 3 - 3M	15.0	28.0	9.2	108.3%	
		Site 4 - OM	20.2	27.6	9.2	119.5%	
		Site 4 - 1M	20.2	27.6	9.2	119.5%	
		Site 5 - OM	25.3	25.4	8.4	118.1%	
		Site 6 - OM	27.7	8.8	7.4	98.8%	

**SPRUCE CREEK ASSOCIATION - Water Quality Data**

<b>Date</b>	07/05/05						
<b>Time</b>	1112						
<b>Monitors</b>	LA JR						
<b>Weather Comments</b>							
<b>Cloud Cover</b>	Haze						
<b>Wind Conditions</b>	Breezy						
<b>Wind Direction</b>							
<b>Waves</b>	Ripples						
<b>Tide</b>	High - 11:26 / 8.17 ft						
<b>RESULTS</b>	<b>Time</b>		<b>OM</b>	<b>1M</b>	<b>2M</b>	<b>3M</b>	<b>Comments</b>
Site 1: Bond Rd	1112	DO (ppm)	9.1	9.3	9.3	9.8	
		Temp (oC)	16.9	16.4	16.2	14.4	
		Salinity (ppt)	27.5	27.6	27.7	28.8	
Site 2: Eagle Pt	1122	DO (ppm)	8.9	9.1	9.0	9.1	Major boat "bozo" on the creek - otherwise a perfect day
		Temp (oC)	18.5	18.0	17.2	17.1	
		Salinity (ppt)	27.2	27.3	27.3	27.4	
Site 3: Moffat's Dock	1130	DO (ppm)	8.9	9.0	9.1		Can't go to 3M
		Temp (oC)	18.3	18.3	17.2		
		Salinity (ppt)	26.8	26.8	27.1		
Site 4: Trading Post	1151	DO (ppm)	7.9	8.0			
		Temp (oC)	21.1	21.0			
		Salinity (ppt)	27.0	27.0			
Site 5: Picott Rd	1158	DO (ppm)	9.0				
		Temp (oC)	25.8				
		Salinity (ppt)	20.0				
Site 6: Wilson Rd		DO (ppm)	15.8				
		Temp (oC)	21.6				
		Salinity (ppt)	0.2				
Repeat Site: 2	1125	DO (ppm)	9.0	9.1	9.1	9.1	
		Temp (oC)	18.6	17.8	17.4	17.0	
		Salinity (ppt)	27.1	27.2	27.3	27.3	
<b>Entered by</b>	PM						
<b>Proofed by</b>	PL						
			Temp	Salinity	DO	Saturation	
			C	ppt	ppm	%	
		Site 1 - OM	16.9	27.5	9.1	110.9%	
		Site 1 - 1M	16.4	27.6	9.3	112.3%	
		Site 1 - 2M	16.2	27.7	9.3	112.0%	
		Site 1 - 3M	14.4	28.8	9.8	114.6%	
		Site 2 - OM	18.5	27.2	8.9	111.7%	
		Site 2 - 1M	18.0	27.3	9.1	113.2%	
		Site 2 - 2M	17.2	27.3	9.0	110.2%	
		Site 2 - 3M	17.1	27.4	9.1	111.3%	
		Site 3 - OM	18.3	26.8	8.9	111.0%	
		Site 3 - 1M	18.3	26.8	9.0	112.3%	
		Site 3 - 2M	17.2	27.1	9.1	111.3%	
		Site 3 - 3M					
		Site 4 - OM	21.1	27.0	7.9	104.0%	
		Site 4 - 1M	21.0	27.0	8.0	105.1%	
		Site 5 - OM	25.8	20.0	9.0	123.8%	
		Site 6 - OM	21.6	0.2	15.8	179.5%	

**SPRUCE CREEK ASSOCIATION - Water Quality Data**

<b>Date</b>	07/05/05						
<b>Time</b>	1705						
<b>Monitors</b>	PL RL						
<b>Weather Comments</b>							
<b>Cloud Cover</b>	Partly Cloudy						
<b>Wind Conditions</b>	Slight Breeze						
<b>Wind Direction</b>	SW						
<b>Waves</b>	Ripples						
<b>Tide</b>	Low - 17:20 / 1.36 ft						
<b>RESULTS</b>	<b>Time</b>		<b>OM</b>	<b>1M</b>	<b>2M</b>	<b>3M</b>	<b>Comments</b>
Site 1: Bond Rd	1725	DO (ppm)	8.4	8.38	8.3	8.4	8 kt breeze, small ripples Refractometer 0 meters = 28.0
		Temp (oC)	20.0	19.9	19.8	19.7	
		Salinity (ppt)	27.3	27.2	27.3	27.2	
Site 2: Eagle Pt	1705	DO (ppm)	8.5	8.53	8.5		8 kt breeze, water calm Refractometer 0 meters = 28.5
		Temp (oC)	21.7	21.4	21.3		
		Salinity (ppt)	27.3	27.2	27.2		
Site 3: Moffat's Dock	1651	DO (ppm)	8.5	8.52	8.3		12 kt breeze with small chop 2M reading really at 1.5M Refractometer 0 meters = 27.5
		Temp (oC)	22.8	22.8	22.8		
		Salinity (ppt)	27.1	27.1	27.1		
Site 4: Trading Post	1812	DO (ppm)	8.8	7.9			Slight breeze 1M reading really at .5M
		Temp (oC)	25.5	25.2			
		Salinity (ppt)	25.9	25.9			
Site 5: Picott Rd	1802	DO (ppm)	12.8				Slow flow Depth = 1 ft of water but measured at 0 meters, green algae
		Temp (oC)	28.9				
		Salinity (ppt)	9.6				
Site 6: Wilson Rd	1750	DO (ppm)	15.4				Water running out, depth = 6", green algae Refractometer 0 meters = 1.0
		Temp (oC)	26.4				
		Salinity (ppt)	0.2				
Repeat Site: 6	1750	DO (ppm)	15.0				
		Temp (oC)	26.4				
		Salinity (ppt)	0.2				
<b>Entered by</b>	PM						
<b>Proofed by</b>	PL						
			Temp	Salinity	DO	Saturation	
			C	ppt	ppm	%	
		Site 1 - OM	20.0	27.3	8.4	108.0%	
		Site 1 - 1M	19.9	27.2	8.4	108.0%	
		Site 1 - 2M	19.8	27.3	8.3	106.8%	
		Site 1 - 3M	19.7	27.2	8.4	107.9%	
		Site 2 - OM	21.7	27.3	8.5	113.3%	
		Site 2 - 1M	21.4	27.2	8.5	113.0%	
		Site 2 - 2M	21.3	27.2	8.5	112.4%	
		Site 2 - 3M					
		Site 3 - OM	22.8	27.1	8.5	115.6%	
		Site 3 - 1M	22.8	27.1	8.5	115.7%	
		Site 3 - 2M	22.8	27.1	8.3	112.7%	
		Site 3 - 3M					
		Site 4 - OM	25.5	25.9	8.8	124.5%	
		Site 4 - 1M	25.2	25.9	7.9	111.2%	
		Site 5 - OM	28.9	9.6	12.8	175.2%	
		Site 6 - OM	26.4	0.2	15.4	191.4%	

**SPRUCE CREEK ASSOCIATION - Water Quality Data**

<b>Date</b>	07/12/05						
<b>Time</b>	0934						
<b>Monitors</b>	SH ME						
<b>Weather Comments</b>							
<b>Cloud Cover</b>	Partly Cloudy						
<b>Wind Conditions</b>	Slight Breeze						
<b>Wind Direction</b>	E						
<b>Waves</b>	Ripples						
<b>Tide</b>	Low - 09:40 / 0.78 ft						
<b>RESULTS</b>	<b>Time</b>		<b>OM</b>	<b>1M</b>	<b>2M</b>	<b>3M</b>	<b>Comments</b>
Site 1: Bond Rd	1002	DO (ppm)	7.4	7.3	7.4		
		Temp (oC)	19.2	18.6	18.3		
		Salinity (ppt)	27.2	27.1	27.1		
Site 2: Eagle Pt	0950	DO (ppm)	6.7	6.7	6.7	6.6	
		Temp (oC)	19.4	18.8	18.7	18.6	
		Salinity (ppt)	26.8	26.9	26.9	27.0	
Site 3: Moffat's Dock	0934	DO (ppm)	6.2	6.2			
		Temp (oC)	20.1	20.0			
		Salinity (ppt)	26.8	26.8			
Site 4: Trading Post	1047	DO (ppm)	6.2	6.4			1m reading taken at 0.5m. Sky is clear, light So breeze
		Temp (oC)	23.3	21.5			
		Salinity (ppt)	24.2	24.9			
Site 5: Picott Rd	1036	DO (ppm)	9.4				
		Temp (oC)	24.9				
		Salinity (ppt)	7.2				
Site 6: Wilson Rd	1026	DO (ppm)	9.7				Flow is to sea.
		Temp (oC)	20.0				
		Salinity (ppt)	0.2				
Repeat Site: 2	0950	DO (ppm)	6.7	6.6	6.6		3m repeat - boat drifted. 2.5m is depth. Reading not taken.
		Temp (oC)	19.4	18.9	18.7		
		Salinity (ppt)	26.8	26.9	26.9		
<b>Entered by</b>	PM						
<b>Proofed by</b>	PL						
			Temp	Salinity	DO	Saturation	
			C	ppt	ppm	%	
		Site 1 - OM	19.2	27.2	7.4	94.1%	
		Site 1 - 1M	18.6	27.1	7.3	91.7%	
		Site 1 - 2M	18.3	27.1	7.4	92.5%	
		Site 1 - 3M					
		Site 2 - OM	19.4	26.8	6.7	85.3%	
		Site 2 - 1M	18.8	26.9	6.7	84.4%	
		Site 2 - 2M	18.7	26.9	6.7	84.3%	
		Site 2 - 3M	18.6	27.0	6.6	82.9%	
		Site 3 - OM	20.1	26.8	6.2	80.0%	
		Site 3 - 1M	20.0	26.8	6.2	79.9%	
		Site 3 - 2M					
		Site 3 - 3M					
		Site 4 - OM	23.3	24.2	6.2	83.6%	
		Site 4 - 1M	21.5	24.9	6.4	83.8%	
		Site 5 - OM	24.9	7.2	9.4	118.3%	
		Site 6 - OM	20.0	0.2	9.7	106.8%	

**SPRUCE CREEK ASSOCIATION - Water Quality Data**

<b>Date</b>	07/12/05						
<b>Time</b>	1529						
<b>Monitors</b>	LA JR						
<b>Weather Comments</b>							
<b>Cloud Cover</b>							
<b>Wind Conditions</b>	Slight Breeze						
<b>Wind Direction</b>							
<b>Waves</b>	Ripples						
<b>Tide</b>	High -- 15:49 / 8.33 ft						
<b>RESULTS</b>	<b>Time</b>		<b>OM</b>	<b>1M</b>	<b>2M</b>	<b>3M</b>	<b>Comments</b>
Site 1: Bond Rd	1529	DO (ppm)	8.2	8.3	8.3	8.4	
		Temp (oC)	17.4	17.2	17.1	17.0	
		Salinity (ppt)	27.1	27.2	27.2	27.3	
Site 2: Eagle Pt	1535	DO (ppm)	8.2	8.3	8.3	8.3	
		Temp (oC)	19.9	18.8	17.9	17.7	
		Salinity (ppt)	26.9	26.9	26.9	27.1	
Site 3: Moffat's Dock	1540	DO (ppm)	8.0	8.1	8.2	8.3	
		Temp (oC)	18.8	18.6	17.6	17.5	
		Salinity (ppt)	26.3	26.3	27.0	27.1	
Site 4: Trading Post	1606	DO (ppm)	9.0	9.1			
		Temp (oC)	23.0	23.0			
		Salinity (ppt)	26.6	26.6			
Site 5: Picott Rd	1614	DO (ppm)	11.7				Current very fast moving - water brown with much pollen
		Temp (oC)	30.1				
		Salinity (ppt)	18.7				
Site 6: Wilson Rd	1620	DO (ppm)	17.4				Algae, pollen, traffic
		Temp (oC)	26.9				
		Salinity (ppt)	0.2				
Repeat Site: 3	1540	DO (ppm)	8.1	8.2	8.3	8.3	
		Temp (oC)	18.7	18.6	17.6	17.5	
		Salinity (ppt)	26.3	26.5	27.0	27.1	
<b>Entered by</b>	PM						
<b>Proofed by</b>	PL						
			<b>Temp</b>	<b>Salinity</b>	<b>DO</b>	<b>Saturation</b>	
			<b>C</b>	<b>ppt</b>	<b>ppm</b>	<b>%</b>	
		Site 1 - OM	17.4	27.1	8.2	100.7%	
		Site 1 - 1M	17.2	27.2	8.3	101.6%	
		Site 1 - 2M	17.1	27.2	8.3	101.4%	
		Site 1 - 3M	17.0	27.3	8.4	102.5%	
		Site 2 - OM	19.9	26.9	8.2	105.5%	
		Site 2 - 1M	18.8	26.9	8.3	104.6%	
		Site 2 - 2M	17.9	26.9	8.3	102.8%	
		Site 2 - 3M	17.7	27.1	8.3	102.5%	
		Site 3 - OM	18.8	26.3	8.0	100.5%	
		Site 3 - 1M	18.6	26.3	8.1	101.3%	
		Site 3 - 2M	17.6	27.0	8.2	101.0%	
		Site 3 - 3M	17.5	27.1	8.3	102.1%	
		Site 4 - OM	23.0	26.6	9.0	122.3%	
		Site 4 - 1M	23.0	26.6	9.1	123.7%	
		Site 5 - OM	30.1	18.7	11.7	171.8%	
		Site 6 - OM	26.9	0.2	17.4	218.2%	

**SPRUCE CREEK ASSOCIATION - Water Quality Data**

<b>Date</b>	07/19/05						
<b>Time</b>	0845						
<b>Monitors</b>	PM SB						
<b>Weather Comments</b>	Hot, hazy, humid, foggy						
<b>Cloud Cover</b>	Overcast, Fog/Haze						
<b>Wind Conditions</b>	Slight Breeze						
<b>Wind Direction</b>	N						
<b>Waves</b>	Calm						
<b>Tide</b>	High - 09:35 / 8.29 ft						
<b>RESULTS</b>	<b>Time</b>		<b>OM</b>	<b>1M</b>	<b>2M</b>	<b>3M</b>	<b>Comments</b>
Site 1: Bond Rd	0935	DO (ppm)	8.7	8.7	8.6	9.0	
		Temp (oC)	14.4	14.3	14.1	13.1	
		Salinity (ppt)	28.7	28.8	28.8	29.3	
Site 2: Eagle Pt	0920	DO (ppm)	8.1	8.2	8.3	8.3	
		Temp (oC)	17.0	16.6	15.8	15.4	
		Salinity (ppt)	28.3	28.3	28.4	28.4	
Site 3: Moffat's Dock	0910	DO (ppm)	8.3	8.3	8.4	8.5	Fog burning off
		Temp (oC)	16.0	16.0	15.3	15.0	
		Salinity (ppt)	28.3	28.2	28.4	28.7	
Site 4: Trading Post	0955	DO (ppm)	7.0	7.1			Some algae trapped in dock. Some oil on water. Hot! Hazy, sunny.
		Temp (oC)	19.4	19.3			
		Salinity (ppt)	28.3	28.2			
Site 5: Picott Rd	1002	DO (ppm)	5.7				6"-wide stream of oil-based stuff coming in on strong in-coming tide. (Oil from where? I-95?)
		Temp (oC)	26.4				
		Salinity (ppt)	23.9				
Site 6: Wilson Rd	1012	DO (ppm)	6.2				Some oil, some algae. Hot!
		Temp (oC)	25.9				
		Salinity (ppt)	2.4				
Repeat Site: 1	0940	DO (ppm)	8.5	8.6	8.8	8.9	Some film/algae on 2nd reading
		Temp (oC)	15.1	14.5	13.8	13.0	
		Salinity (ppt)	28.3	28.6	28.9	29.3	
<b>Entered by</b>	PM						
<b>Proofed by</b>	PL						
			Temp	Salinity	DO	Saturation	
			C	ppt	ppm	%	
		Site 1 - OM	14.4	28.7	8.7	101.6%	
		Site 1 - 1M	14.3	28.8	8.7	101.5%	
		Site 1 - 2M	14.1	28.8	8.6	99.9%	
		Site 1 - 3M	13.1	29.3	9.0	102.8%	
		Site 2 - OM	17.0	28.3	8.1	99.4%	
		Site 2 - 1M	16.6	28.3	8.2	99.9%	
		Site 2 - 2M	15.8	28.4	8.3	99.6%	
		Site 2 - 3M	15.4	28.4	8.3	98.8%	
		Site 3 - OM	16.0	28.3	8.3	99.9%	
		Site 3 - 1M	16.0	28.2	8.3	99.8%	
		Site 3 - 2M	15.3	28.4	8.4	99.8%	
		Site 3 - 3M	15.0	28.7	8.5	100.5%	
		Site 4 - OM	19.4	28.3	7.0	90.0%	
		Site 4 - 1M	19.3	28.2	7.1	91.0%	
		Site 5 - OM	26.4	23.9	5.7	81.0%	
		Site 6 - OM	25.9	2.4	6.2	77.3%	

**SPRUCE CREEK ASSOCIATION - Water Quality Data**

<b>Date</b>	07/19/05						
<b>Time</b>	1500						
<b>Monitors</b>	RL PL						
<b>Weather Comments</b>	Hot, hazy w/fog, humid						
<b>Cloud Cover</b>	Fog/Haze						
<b>Wind Conditions</b>	Slight Breeze						
<b>Wind Direction</b>	S						
<b>Waves</b>	Ripples						
<b>Tide</b>	Low - 15:34 / 0.78 ft						
<b>RESULTS</b>	<b>Time</b>		<b>OM</b>	<b>1M</b>	<b>2M</b>	<b>3M</b>	<b>Comments</b>
Site 1: Bond Rd	1523	DO (ppm)	8.76	8.60	8.66	8.76	8k SE wind
		Temp (oC)	18.9	18.5	18.4	18.4	
		Salinity (ppt)	28.2	28.0	28.1	28.1	
Site 2: Eagle Pt	1514	DO (ppm)	8.45	8.50	8.30	8.40	Sheltered from wind; low tide; fog & haze 3rd measurement = 2.5 meters
		Temp (oC)	20.9	20.5	20.3	19.9	
		Salinity (ppt)	28.2	28.0	28.1	28.0	
Site 3: Moffat's Dock	1507	DO (ppm)	8.36	8.20			10 kt So wind, low tide, fog & haze; blue herons
		Temp (oC)	22.6	22.5			
		Salinity (ppt)	28.2	28.1			
Site 4: Trading Post	1610	DO (ppm)	8.60	8.60			Small fish 2nd measurement = .75 meters
		Temp (oC)	27.1	25.7			
		Salinity (ppt)	27.1	27.3			
Site 5: Picott Rd	1602	DO (ppm)	11.20				Heavy green algae; flow slightly out; approx 6-9" depth
		Temp (oC)	32.1				
		Salinity (ppt)	15.7				
Site 6: Wilson Rd	1546	DO (ppm)	14.40				Green algae in stagnant pond; flow w/adjacent stagnant pond; approx 6" depth
		Temp (oC)	30.2				
		Salinity (ppt)	1.2				
Repeat Site: 2	1514	DO (ppm)	8.50	8.45	8.44	8.50	Sheltered from wind; low tide; fog & haze 3rd measurement = 2.5 meters
		Temp (oC)	20.8	20.7	20.5	20.3	
		Salinity (ppt)	28.0	28.0	28.0	28.0	
<b>Entered by</b>	PM						
<b>Proofed by</b>	PL						
			Temp	Salinity	DO	Saturation	
			C	ppt	ppm	%	
		Site 1 - OM	18.9	28.2	8.8	111.5%	
		Site 1 - 1M	18.5	28.0	8.6	108.5%	
		Site 1 - 2M	18.4	28.1	8.7	109.1%	
		Site 1 - 3M	18.4	28.1	8.8	110.3%	
		Site 2 - OM	20.9	28.2	8.5	111.6%	
		Site 2 - 1M	20.5	28.0	8.5	111.3%	
		Site 2 - 2M	20.3	28.1	8.3	108.3%	
		Site 2 - 3M	19.9	28.0	8.4	108.8%	
		Site 3 - OM	22.6	28.2	8.4	113.9%	
		Site 3 - 1M	22.5	28.1	8.2	111.4%	
		Site 3 - 2M					
		Site 3 - 3M					
		Site 4 - OM	27.1	27.1	8.6	125.8%	
		Site 4 - 1M	25.7	27.3	8.6	123.0%	
		Site 5 - OM	32.1	15.7	11.2	167.2%	
		Site 6 - OM	30.2	1.2	14.4	192.4%	

**SPRUCE CREEK ASSOCIATION - Water Quality Data**

<b>Date</b>	07/26/05						
<b>Time</b>	0915						
<b>Monitors</b>	PM SH						
<b>Weather Comments</b>	Sunny, warm, wispy clouds						
<b>Cloud Cover</b>	Partly Cloudy						
<b>Wind Conditions</b>	Calm						
<b>Wind Direction</b>							
<b>Waves</b>	Calm						
<b>Tide</b>	Low (very!) - 09:44 / -0.60 ft						
<b>RESULTS</b>	<b>Time</b>		<b>OM</b>	<b>1M</b>	<b>2M</b>	<b>3M</b>	<b>Comments</b>
Site 1: Bond Rd	0955	DO (ppm)	8.8	8.7	8.7	8.8	Very slight breeze (occasional). Flotsam/scum, grass, dirt on water - lots! 3rd reading at 2.5M
		Temp (oC)	18.6	18.1	18.1	17.9	
		Salinity (ppt)	28.8	28.9	29.0	29.1	
Site 2: Eagle Pt	0940	DO (ppm)	7.6	7.7	7.9		Used 28.2 salinity to calibrate.
		Temp (oC)	20.0	19.2	18.8		
		Salinity (ppt)	28.6	28.6	28.7		
Site 3: Moffat's Dock	0928	DO (ppm)	7.9	8.0			Used 26.5 salinity to calibrate. Very still - no breeze at all. Super low tide.
		Temp (oC)	20.5	20.3			
		Salinity (ppt)	28.1	28.2			
Site 4: Trading Post	1025	DO (ppm)	6.1	6.2			Some scum, natural debris floating. Hot. Tide outbound. Used 26.7 salinity to calibrate. 2nd reading at .5M.
		Temp (oC)	23.5	21.5			
		Salinity (ppt)	27.1	27.5			
Site 5: Picott Rd	1035	DO (ppm)	8.5				Tide still outbound with medium flow. Some scum in vicinity but not at culvert. Breezy. Used 15.0 salinity to calibrate.
		Temp (oC)	26.0				
		Salinity (ppt)	14.9				
Site 6: Wilson Rd	1045	DO (ppm)					Too little water to make a measurement.
		Temp (oC)					
		Salinity (ppt)					
Repeat Site: 5	1035	DO (ppm)	8.6				
		Temp (oC)	25.9				
		Salinity (ppt)	14.9				
<b>Entered by</b>	PM						
<b>Proofed by</b>	PL						
			Temp	Salinity	DO	Saturation	
			C	ppt	ppm	%	
		Site 1 - OM	18.6	28.8	8.8	111.7%	
		Site 1 - 1M	18.1	28.9	8.7	109.5%	
		Site 1 - 2M	18.1	29.0	8.7	109.5%	
		Site 1 - 3M	17.9	29.1	8.8	110.4%	
		Site 2 - OM	20.0	28.6	7.6	98.9%	
		Site 2 - 1M	19.2	28.6	7.7	98.8%	
		Site 2 - 2M	18.8	28.7	7.9	100.6%	
		Site 2 - 3M					
		Site 3 - OM	20.5	28.1	7.9	103.5%	
		Site 3 - 1M	20.3	28.2	8.0	104.5%	
		Site 3 - 2M					
		Site 3 - 3M					
		Site 4 - OM	23.5	27.1	6.1	83.9%	
		Site 4 - 1M	21.5	27.5	6.2	82.4%	
		Site 5 - OM	26.0	14.9	8.5	114.0%	
		Site 6 - OM					

**SPRUCE CREEK ASSOCIATION - Water Quality Data**

<b>Date</b>	07/26/05						
<b>Time</b>	1510						
<b>Monitors</b>	PL ME						
<b>Weather Comments</b>	Hot, Hazy, Humid						
<b>Cloud Cover</b>	Partly Cloudy						
<b>Wind Conditions</b>	Slight Breeze						
<b>Wind Direction</b>	Calm						
<b>Waves</b>	Calm						
<b>Tide</b>	High -- 15:56 / 9.89 ft						
<b>RESULTS</b>	<b>Time</b>		<b>OM</b>	<b>1M</b>	<b>2M</b>	<b>3M</b>	<b>Comments</b>
Site 1: Bond Rd	1550	DO (ppm)	9.1	9.3	9.4	9.3	Slight ripples, hint of a breeze South
		Temp (oC)	15.6	14.9	14.7	14.6	
		Salinity (ppt)	30.0	30.0	30.0	30.0	
Site 2: Eagle Pt	1540	DO (ppm)	9.0	9.0	8.9	8.9	Swimmers w/dog, hot, calm
		Temp (oC)	18.1	17.2	16.1	16.0	
		Salinity (ppt)	29.6	29.2	29.3	29.3	
Site 3: Moffat's Dock	1535	DO (ppm)	9.2	9.3	9.3	9.3	Calm, hot, a few motor boats
		Temp (oC)	18.0	17.3	16.7	16.2	
		Salinity (ppt)	29.3	29.2	29.2	29.3	
Site 4: Trading Post	1647	DO (ppm)	9.0	9.1	9.2		Minnows, clearer water than at sites 5&6. A little sludge-like substance at "T" of dock. Incoming tide. 3rd reading = 1.5M.
		Temp (oC)	21.0	20.8	20.8		
		Salinity (ppt)	29.0	28.9	28.9		
Site 5: Picott Rd	1625	DO (ppm)	9.3	9.4			Fast moving current, brown sludge on top. 2nd reading = .5M
		Temp (oC)	25.4	25.6			
		Salinity (ppt)	27.4	27.4			
Site 6: Wilson Rd	1615	DO (ppm)	12.0				Comorant swimming, incoming tide, brown water, brown sludge flowing on top (sewage?), astronomical high tides, blue dragon flies.
		Temp (oC)	29.0				
		Salinity (ppt)	12.2				
Repeat Site: 2	1540	DO (ppm)	9.0	9.0	9.0	9.0	
		Temp (oC)	18.2	16.8	16.1	15.9	
		Salinity (ppt)	29.4	29.0	29.3	29.3	
<b>Entered by</b>	PM						
<b>Proofed by</b>	PL						
			<b>Temp</b>	<b>Salinity</b>	<b>DO</b>	<b>Saturation</b>	
			<b>C</b>	<b>ppt</b>	<b>ppm</b>	<b>%</b>	
		Site 1 - OM	15.6	30.0	9.1	109.8%	
		Site 1 - 1M	14.9	30.0	9.3	110.6%	
		Site 1 - 2M	14.7	30.0	9.4	111.4%	
		Site 1 - 3M	14.6	30.0	9.3	110.0%	
		Site 2 - OM	18.1	29.6	9.0	113.7%	
		Site 2 - 1M	17.2	29.2	9.0	111.5%	
		Site 2 - 2M	16.1	29.3	8.9	108.0%	
		Site 2 - 3M	16.0	29.3	8.9	107.8%	
		Site 3 - OM	18.0	29.3	9.2	115.8%	
		Site 3 - 1M	17.3	29.2	9.3	115.4%	
		Site 3 - 2M	16.7	29.2	9.3	114.1%	
		Site 3 - 3M	16.2	29.3	9.3	113.1%	
		Site 4 - OM	20.8	28.9	9.1	120.5%	
		Site 4 - 1M	20.8	28.9	9.1	120.5%	
		Site 5 - OM	25.4	27.4	9.3	132.4%	
		Site 6 - OM	29.0	12.2	12.0	166.9%	

SPRUCE CREEK ASSOCIATION - Water Quality Data							
Date	08/02/05						
Time	1025						
Monitors	LA ME						
Weather Comments	Clear, sunny, calm						
Cloud Cover							
Wind Conditions	Calm						
Wind Direction							
Waves							
Tide	High - 10:20 / 7.88 ft						
RESULTS	Time		OM	1M	2M	3M	Comments
Site 1: Bond Rd	1027	DO (ppm)	8.5	8.7	8.8	8.7	
		Temp (oC)	17.5	17.2	16.8	16.5	
		Salinity (ppt)	28.2	28.1	28.0	28.1	
Site 2: Eagle Pt	1034	DO (ppm)	8.0	8.3	8.5	8.6	
		Temp (oC)	19.3	18.1	17.6	17.3	
		Salinity (ppt)	27.2	27.5	27.7	27.7	
Site 3: Moffat's Dock	1043	DO (ppm)	7.7	8.0	8.4	8.6	
		Temp (oC)	20.4	18.7	17.7	17.1	
		Salinity (ppt)	24.6	25.5	25.8	26.3	
Site 4: Trading Post	1120	DO (ppm)	7.1	7.1			Batteries in salinity meter died. Replaced with others on table, worked initially then died. I knew readings were inaccurate, went home & replaced batteries again.
		Temp (oC)	23.4	24.0			
		Salinity (ppt)	24.0	24.0			
Site 5: Picott Rd	1140	DO (ppm)	7.0	7.0			
		Temp (oC)	25.0	25.0			
		Salinity (ppt)	21.2	21.2			
Site 6: Wilson Rd		DO (ppm)					
		Temp (oC)					
		Salinity (ppt)					
Repeat Site: 1	1027	DO (ppm)	8.6	8.7	8.7	8.9	
		Temp (oC)	18.0	17.3	16.6	16.6	
		Salinity (ppt)	28.0	28.0	28.1	28.2	
Entered by	PM						
Proofed by	CH						
			Temp	Salinity	DO	Saturation	
			C	ppt	ppm	%	
		Site 1 - OM	17.5	28.2	8.5	105.3%	
		Site 1 - 1M	17.2	28.1	8.7	107.1%	
		Site 1 - 2M	16.8	28.0	8.8	107.4%	
		Site 1 - 3M	16.5	28.1	8.7	105.6%	
		Site 2 - OM	19.3	27.2	8.0	102.0%	
		Site 2 - 1M	18.1	27.5	8.3	103.6%	
		Site 2 - 2M	17.6	27.7	8.5	105.2%	
		Site 2 - 3M	17.3	27.7	8.6	105.8%	
		Site 3 - OM	20.4	24.6	7.7	98.6%	
		Site 3 - 1M	18.7	25.5	8.0	99.8%	
		Site 3 - 2M	17.7	25.8	8.4	103.0%	
		Site 3 - 3M	17.1	26.3	8.6	104.5%	
		Site 4 - OM	23.4	24.0	7.1	95.7%	
		Site 4 - 1M	24.0	24.0	7.1	96.8%	
		Site 5 - OM	25.0	21.2	7.0	95.6%	
		Site 6 - OM					

**SPRUCE CREEK ASSOCIATION - Water Quality Data**

<b>Date</b>	08/02/05						
<b>Time</b>	1530						
<b>Monitors</b>	PL RL						
<b>Weather Comments</b>	Heavy rain night before (8/1/05)						
<b>Cloud Cover</b>	Partly cloudy						
<b>Wind Conditions</b>	Slight Breeze, Breezy						
<b>Wind Direction</b>							
<b>Waves</b>	Ripples, Small Waves						
<b>Tide</b>	Low - 16:17 / 1.53 ft						
<b>RESULTS</b>	<b>Time</b>		<b>OM</b>	<b>1M</b>	<b>2M</b>	<b>3M</b>	<b>Comments</b>
Site 1: Bond Rd		DO (ppm)	8.7	8.7	9.0	8.9	Northwest 10-15 kts; full sun
		Temp (oC)	21.2	21.1	21.0	20.5	
		Salinity (ppt)	28.9	28.6	28.9	28.9	
Site 2: Eagle Pt	1616	DO (ppm)	8.4	8.6	8.7	8.7	North wind approx 10 kts (ripples); gust to 15 kts; swimmers; fishermen on shore
		Temp (oC)	22.7	22.3	21.7	21.2	
		Salinity (ppt)	28.4	28.7	28.8	28.8	
Site 3: Moffat's Dock	1604	DO (ppm)	7.9	8.5			North wind approx 10 kts; full sun
		Temp (oC)	23.8	22.6			
		Salinity (ppt)	28.5	28.8			
Site 4: Trading Post	1711	DO (ppm)	9.7				Brown/dead algae floating - no current. Tide at height of dam. Heavy erosion on path from parking lot.
		Temp (oC)	28.1				
		Salinity (ppt)	24.2				
Site 5: Picott Rd	1658	DO (ppm)	11.6				Algae is turning brown. Slight outward flow with silt. West breeze. Hot/full sun.
		Temp (oC)	27.9				
		Salinity (ppt)	1.8				
Site 6: Wilson Rd	1650	DO (ppm)	9.5				Rapid flow toward Spruce Creek. Algae gone or dead. Mixing of water in pool. Brown algae. 9" water depth.
		Temp (oC)	24.0				
		Salinity (ppt)	0.2				
Repeat Site: 3	1604	DO (ppm)	7.9	8.5			
		Temp (oC)	23.5	23.1			
		Salinity (ppt)	28.7	28.8			
<b>Entered by</b>	PM						
<b>Proofed by</b>	CH						
			Temp	Salinity	DO	Saturation	
			C	ppt	ppm	%	
		Site 1 - OM	21.2	28.9	8.7	116.0%	
		Site 1 - 1M	21.1	28.6	8.7	115.6%	
		Site 1 - 2M	21.0	28.9	9.0	119.6%	
		Site 1 - 3M	20.5	28.9	8.9	117.2%	
		Site 2 - OM	22.7	28.4	8.4	114.7%	
		Site 2 - 1M	22.3	28.7	8.6	116.8%	
		Site 2 - 2M	21.7	28.8	8.7	117.0%	
		Site 2 - 3M	21.2	28.8	8.7	115.9%	
		Site 3 - OM	23.8	28.5	7.9	110.1%	
		Site 3 - 1M	22.6	28.8	8.5	116.2%	
		Site 3 - 2M					
		Site 3 - 3M					
		Site 4 - OM	28.1	24.2	9.7	142.0%	
		Site 4 - 1M					
		Site 5 - OM	27.9	1.8	11.6	149.4%	
		Site 6 - OM	24.0	0.2	9.5	113.0%	

**SPRUCE CREEK ASSOCIATION - Water Quality Data**

<b>Date</b>	08/09/05						
<b>Time</b>	0900						
<b>Monitors</b>	ME						
<b>Weather Comments</b>	Sunny, Calm						
<b>Cloud Cover</b>	Partly cloudy						
<b>Wind Conditions</b>	Calm						
<b>Wind Direction</b>							
<b>Waves</b>							
<b>Tide</b>	Low - 08:26 / 0.55 ft						
<b>RESULTS</b>	<b>Time</b>		<b>OM</b>	<b>1M</b>	<b>2M</b>	<b>3M</b>	<b>Comments</b>
Site 1: Bond Rd		DO (ppm) Temp (oC) Salinity (ppt)					<i>(Salinity meter not w/in 10% but I didn't know how long it had been warming up, so I went anyway.)</i>
Site 2: Eagle Pt		DO (ppm) Temp (oC) Salinity (ppt)					
Site 3: Moffat's Dock		DO (ppm) Temp (oC) Salinity (ppt)					
Site 4: Trading Post	0910	DO (ppm) Temp (oC) Salinity (ppt)	4.8 23.8 24.4	5.4 25.7 23.3			Second reading at .5M Sun getting very warm at surface of water
Site 5: Picott Rd	0855	DO (ppm) Temp (oC) Salinity (ppt)	4.7 25.8 16.5				Algae at its peak density / die off
Site 6: Wilson Rd	0845	DO (ppm) Temp (oC) Salinity (ppt)	4.4 22.2 1.7				Very low, good flow
Repeat Site: 5	0845	DO (ppm) Temp (oC) Salinity (ppt)	4.4 25.8 19.0				
<b>Entered by</b>	PM						
<b>Proofed by</b>	CH						
			Temp C	Salinity ppt	DO ppm	Saturation %	
		Site 1 - OM					
		Site 1 - 1M					
		Site 1 - 2M					
		Site 1 - 3M					
		Site 2 - OM					
		Site 2 - 1M					
		Site 2 - 2M					
		Site 2 - 3M					
		Site 3 - OM					
		Site 3 - 1M					
		Site 3 - 2M					
		Site 3 - 3M					
		Site 4 - OM	23.8	24.4	4.8	65.3%	
		Site 4 - 1M	25.7	23.3	5.4	75.5%	
		Site 5 - OM	25.8	16.5	4.7	62.7%	
		Site 6 - OM	25.8	1.7	4.4	54.6%	

SPRUCE CREEK ASSOCIATION - Water Quality Data							
Date	08/09/05						
Time	1330						
Monitors	SB GS						
Weather Comments	Overcast, threatening rain, wind 5-10 mph, picking up						
Cloud Cover	Overcast, threatening rain, wind 5-10 mph, picking up						
Wind Conditions	Slight Breeze, Breezy						
Wind Direction							
Waves							
Tide	High - 14:31 / 8.64 ft						
RESULTS	Time		OM	1M	2M	3M	Comments
Site 1: Bond Rd		DO (ppm)	9.1	9.2	9.1	9.2	
		Temp (oC)	15.3	15.1	15.1	15.0	
		Salinity (ppt)	24.8	25.4	25.8	26.0	
Site 2: Eagle Pt		DO (ppm)	8.4	8.6	8.8	8.9	
		Temp (oC)	17.4	17.3	16.5	16.4	
		Salinity (ppt)	26.3	26.6	26.5	26.6	
Site 3: Moffat's Dock		DO (ppm)	8.7	8.8	8.9	8.7	
		Temp (oC)	18.7	17.9	16.4	15.6	
		Salinity (ppt)	27.0	27.2	27.0	27.0	
Site 4: Trading Post		DO (ppm)	8.6	8.5			
		Temp (oC)	22.0	22.0			
		Salinity (ppt)	29.1	29.1			
Site 5: Picott Rd		DO (ppm)	5.2				
		Temp (oC)	29.0				
		Salinity (ppt)	27.7				
Site 6: Wilson Rd		DO (ppm)	5.0				
		Temp (oC)	29.6				
		Salinity (ppt)	7.4				
Repeat Site: 1		DO (ppm)	9.1	9.1	9.2	9.2	
		Temp (oC)	15.2	15.1	14.9	14.8	
		Salinity (ppt)	26.5	26.4	26.3	26.1	
Entered by	PM						
Proofed by	CH						
			Temp	Salinity	DO	Saturation	
			C	ppt	ppm	%	
		Site 1 - OM	15.3	24.8	9.1	105.7%	
		Site 1 - 1M	15.1	25.4	9.2	106.8%	
		Site 1 - 2M	15.1	25.8	9.1	105.9%	
		Site 1 - 3M	15.0	26.0	9.2	107.0%	
		Site 2 - OM	17.4	26.3	8.4	102.7%	
		Site 2 - 1M	17.3	26.6	8.6	105.1%	
		Site 2 - 2M	16.5	26.5	8.8	105.8%	
		Site 2 - 3M	16.4	26.6	8.9	106.9%	
		Site 3 - OM	18.7	27.0	8.7	109.5%	
		Site 3 - 1M	17.9	27.2	8.8	109.2%	
		Site 3 - 2M	16.4	27.0	8.9	107.1%	
		Site 3 - 3M	15.6	27.0	8.7	103.1%	
		Site 4 - OM	22.0	29.1	8.6	116.5%	
		Site 4 - 1M	22.0	29.1	8.5	115.1%	
		Site 5 - OM	29.0	27.7	5.2	78.8%	
		Site 6 - OM	29.6	7.4	5.0	68.4%	

**SPRUCE CREEK ASSOCIATION - Water Quality Data**

<b>Date</b>	08/16/05						
<b>Time</b>	0800						
<b>Monitors</b>	PM SH						
<b>Weather Comments</b>	Rained 2 days ago, cool, sunny						
<b>Cloud Cover</b>	Partly Cloudy						
<b>Wind Conditions</b>	Calm						
<b>Wind Direction</b>							
<b>Waves</b>	Calm, Ripples						
<b>Tide</b>	High - 08:13 / 7.94 ft						
<b>RESULTS</b>	<b>Time</b>		<b>OM</b>	<b>1M</b>	<b>2M</b>	<b>3M</b>	<b>Comments</b>
Site 1: Bond Rd	0820	DO (ppm)	7.8	7.8	7.8	7.8	Salinity kept climbing from 17 up to 21.8 (and would have kept going). Fish jumping, some ripples. Refract = 32.
		Temp (oC)	16.8	16.8	16.8	16.8	
		Salinity (ppt)	21.8	22.0	22.1	22.3	
Site 2: Eagle Pt	0810	DO (ppm)	7.4	7.5	7.5	7.4	Stripers jumping out of the water. Float/anchor missing. Refract = 31.
		Temp (oC)	17.2	17.1	17.1	17.0	
		Salinity (ppt)	18.1	19.6	20.2	20.7	
Site 3: Moffat's Dock	0800	DO (ppm)	7.1	7.5	7.5	7.5	Some dry-mud scum on water. Very still. Refract = 32.
		Temp (oC)	17.4	17.3	17.1	17.0	
		Salinity (ppt)	20.2	21.1	21.6	21.9	
Site 4: Trading Post	0850	DO (ppm)	6.4	6.4			Some natural debris. Salinity is still climbing... Low battery flickering on Salinity meter. Refract = 30.
		Temp (oC)	18.0	17.8			
		Salinity (ppt)	19.4	20.0			
Site 5: Picott Rd	0905	DO (ppm)	6.2	6.8			Good flow in. 2nd reading = .5m. Salinity still rising... Refract = 9.0.
		Temp (oC)	20.4	20.8			
		Salinity (ppt)	13.3	16.4			
Site 6: Wilson Rd	0915	DO (ppm)	9.0				Outflow just began. Some foam, very little bit of oil film on top. Refract = 3.0.
		Temp (oC)	17.2				
		Salinity (ppt)	0.2				
Repeat Site: 4	0850	DO (ppm)	6.4	6.4			
		Temp (oC)	17.9	17.8			
		Salinity (ppt)	20.5	20.8			
<b>Entered by</b>	PM						
<b>Proofed by</b>	CH						
			Temp	Salinity	DO	Saturation	
			C	ppt	ppm	%	
		Site 1 - OM	16.8	21.8	7.8	91.7%	<i>If use 32 salinity, saturation = 97.5%</i>
		Site 1 - 1M	16.8	22.0	7.8	91.8%	
		Site 1 - 2M	16.8	22.1	7.8	91.9%	
		Site 1 - 3M	16.8	22.3	7.8	92.0%	
		Site 2 - OM	17.2	18.1	7.4	85.7%	<i>If use 31 salinity, saturation = 92.7%</i>
		Site 2 - 1M	17.1	19.6	7.5	87.5%	
		Site 2 - 2M	17.1	20.2	7.5	87.8%	
		Site 2 - 3M	17.0	20.7	7.4	86.8%	
		Site 3 - OM	17.4	20.2	7.1	83.7%	<i>If use 32 salinity, saturation = 89.8%</i>
		Site 3 - 1M	17.3	21.1	7.5	88.7%	
		Site 3 - 2M	17.1	21.6	7.5	88.6%	
		Site 3 - 3M	17.0	21.9	7.5	88.6%	
		Site 4 - OM	18.0	19.4	6.4	75.9%	<i>If use 30 salinity, saturation = 80.9%</i>
		Site 4 - 1M	17.8	20.0	6.4	75.9%	
		Site 5 - OM	20.4	13.3	6.2	74.3%	<i>If use 9 salinity, saturation = 72.5%</i>
		Site 6 - OM	17.2	0.2	9.0	93.6%	<i>If use 3 salinity, saturation = 95.2%</i>

**SPRUCE CREEK ASSOCIATION - Water Quality Data**

<b>Date</b>	08/16/05						
<b>Time</b>	1340						
<b>Monitors</b>	PM ME						
<b>Weather Comments</b>	Beautiful!						
<b>Cloud Cover</b>	Partly Cloudy						
<b>Wind Conditions</b>	Breezy						
<b>Wind Direction</b>	E						
<b>Waves</b>	Small Waves						
<b>Tide</b>	Low - 14:14 / 1.09 ft						
<b>RESULTS</b>	<b>Time</b>		<b>OM</b>	<b>1M</b>	<b>2M</b>	<b>3M</b>	<b>Comments</b>
Site 1: Bond Rd	1415	DO (ppm)	8.2	8.2	8.1		Salinity meter still waaaaay off! Refract = 32.
		Temp (oC)	20.0	19.0	18.7		
		Salinity (ppt)	26.1	25.9	25.9		
Site 2: Eagle Pt	1402	DO (ppm)	7.9	8.1	8.1		Anchor/float missing. Refract = 30.
		Temp (oC)	19.9	19.4	19.3		
		Salinity (ppt)	26.7	26.5	26.5		
Site 3: Moffat's Dock	1342	DO (ppm)	8.2	8.4			Strong breeze. Refract = 31.
		Temp (oC)	20.6	20.7			
		Salinity (ppt)	24.6	24.9			
Site 4: Trading Post	1440	DO (ppm)	8.0	8.3			Strong breeze, some grass in water. 2nd reading = .5m. Refract = 27.
		Temp (oC)	23.9	23.4			
		Salinity (ppt)	24.0	23.9			
Site 5: Picott Rd	1450	DO (ppm)	13.4				Water is brownish. Refract = 6.
		Temp (oC)	25.4				
		Salinity (ppt)	3.2				
Site 6: Wilson Rd	1500	DO (ppm)	11.6				Outflow strong. Water brownish. Refract = 3.
		Temp (oC)	22.7				
		Salinity (ppt)	0.2				
Repeat Site: 3	1342	DO (ppm)	8.2	8.4			
		Temp (oC)	20.7	20.7			
		Salinity (ppt)	25.3	25.4			
<b>Entered by</b>	PM						
<b>Proofed by</b>	CH						
			Temp	Salinity	DO	Saturation	
			C	ppt	ppm	%	
		Site 1 - OM	20.0	26.1	8.2	105.2%	<i>If use 32 salinity, saturation = 108.9%</i>
		Site 1 - 1M	19.0	25.9	8.2	103.1%	
		Site 1 - 2M	18.7	25.9	8.1	101.3%	
		Site 1 - 3M					
		Site 2 - OM	19.9	26.7	7.9	101.5%	<i>If use 30 salinity, saturation = 103.5%</i>
		Site 2 - 1M	19.4	26.5	8.1	103.0%	
		Site 2 - 2M	19.3	26.5	8.1	102.8%	
		Site 2 - 3M					
		Site 3 - OM	20.6	24.6	8.2	105.4%	<i>If use 31 salinity, saturation = 109.5%</i>
		Site 3 - 1M	20.7	24.9	8.4	108.4%	
		Site 3 - 2M					
		Site 3 - 3M					
		Site 4 - OM	23.9	24.0	8.0	108.8%	<i>If use 27 salinity, saturation = 110.7%</i>
		Site 4 - 1M	23.4	23.9	8.3	111.9%	
		Site 5 - OM	25.4	3.2	13.4	166.3%	<i>If use 6 salinity, saturation = 169.0%</i>
		Site 6 - OM	22.7	0.2	11.6	134.6%	<i>If use 3 salinity, saturation = 136.8%</i>

**SPRUCE CREEK ASSOCIATION - Water Quality Data**

<b>Date</b>	08/23/05						
<b>Time</b>	0730						
<b>Monitors</b>	SB LA						
<b>Weather Comments</b>	Beautiful fall-like weather						
<b>Cloud Cover</b>	None						
<b>Wind Conditions</b>	Calm						
<b>Wind Direction</b>							
<b>Waves</b>	Calm						
<b>Tide</b>	Low - 08:25 / -0.82 ft						
<b>RESULTS</b>	<b>Time</b>		<b>OM</b>	<b>1M</b>	<b>2M</b>	<b>3M</b>	<b>Comments</b>
Site 1: Bond Rd	0745	DO (ppm)	7.4	7.4	7.4		Put new batteries in salinity meter.
		Temp (oC)	18.1	18.1	18.1		
		Salinity (ppt)	22.5	24.0	25.0		
Site 2: Eagle Pt	0800	DO (ppm)	7.0	6.9	6.9	7.1	
		Temp (oC)	18.7	18.7	18.6	18.5	
		Salinity (ppt)	28.6	28.7	28.8	28.8	
Site 3: Moffat's Dock	0810	DO (ppm)	6.6				
		Temp (oC)	18.8				
		Salinity (ppt)	29.2				
Site 4: Trading Post	0830	DO (ppm)	5.8				
		Temp (oC)	20.0				
		Salinity (ppt)	26.8				
Site 5: Picott Rd	0840	DO (ppm)	4.0				Increase in amount of trash at this site. Checked out the trash - old bottles to the right of the site in the brambles. Ugh.
		Temp (oC)	20.6				
		Salinity (ppt)	23.3				
Site 6: Wilson Rd	0845	DO (ppm)	4.0				Increase in amount of trash at this site.
		Temp (oC)	19.0				
		Salinity (ppt)	10.0				
Repeat Site: 1	0745	DO (ppm)	7.5	7.4	7.3		
		Temp (oC)	18.1	17.1	18.0		
		Salinity (ppt)	29.8	29.5	29.4		
<b>Entered by</b>	PM						
<b>Proofed by</b>	CH						
			Temp	Salinity	DO	Saturation	
			C	ppt	ppm	%	
		Site 1 - OM	18.1	22.5	7.4	89.6%	
		Site 1 - 1M	18.1	24.0	7.4	90.4%	
		Site 1 - 2M	18.1	25.0	7.4	91.0%	
		Site 1 - 3M					
		Site 2 - OM	18.7	28.6	7.0	88.9%	
		Site 2 - 1M	18.7	28.7	6.9	87.7%	
		Site 2 - 2M	18.6	28.8	6.9	87.6%	
		Site 2 - 3M	18.5	28.8	7.1	90.0%	
		Site 3 - OM	18.8	29.2	6.6	84.3%	
		Site 3 - 1M					
		Site 3 - 2M					
		Site 3 - 3M					
		Site 4 - OM	20.0	26.8	5.8	74.7%	
		Site 4 - 1M					
		Site 5 - OM	20.6	23.3	4.0	51.0%	
		Site 6 - OM	19.0	10.0	4.0	45.8%	

**SPRUCE CREEK ASSOCIATION - Water Quality Data**

<b>Date</b>	08/23/05						
<b>Time</b>	1400						
<b>Monitors</b>	PM DF						
<b>Weather Comments</b>	Beautiful fall-like weather						
<b>Cloud Cover</b>	Partly Cloudy						
<b>Wind Conditions</b>	Slight Breeze						
<b>Wind Direction</b>	W						
<b>Waves</b>	Ripples						
<b>Tide</b>	High - 14:33 / 10.27 ft						
<b>RESULTS</b>	<b>Time</b>		<b>OM</b>	<b>1M</b>	<b>2M</b>	<b>3M</b>	<b>Comments</b>
Site 1: Bond Rd	1420	DO (ppm)	8.2	8.4	8.6	8.5	
		Temp (oC)	17.1	16.9	16.8	16.8	
		Salinity (ppt)	28.3	28.8	29.2	29.5	
Site 2: Eagle Pt	1410	DO (ppm)	7.9	8.0	8.2	8.1	
		Temp (oC)	17.9	17.7	17.5	17.4	
		Salinity (ppt)	28.0	28.6	29.1	29.3	
Site 3: Moffat's Dock	1400	DO (ppm)	7.8	8.0	8.0	8.0	
		Temp (oC)	19.0	17.9	17.5	17.3	
		Salinity (ppt)	28.5	29.1	29.3	29.5	
Site 4: Trading Post	1500	DO (ppm)	8.1	8.1	8.1		Very high tide. 3rd reading = 1.5M
		Temp (oC)	19.5	19.4	19.3		
		Salinity (ppt)	29.8	29.9	30.0		
Site 5: Picott Rd	1515	DO (ppm)	8.3	8.3			Strong flow in. High tide.
		Temp (oC)	22.3	22.2			
		Salinity (ppt)	28.8	29.4			
Site 6: Wilson Rd	1520	DO (ppm)	11.4				Still flowing in. Water seems darkish. Very high tide.
		Temp (oC)	26.4				
		Salinity (ppt)	26.2				
Repeat Site: 4	1500	DO (ppm)	8.1	8.1	8.1		
		Temp (oC)	19.3	19.3	19.3		
		Salinity (ppt)	30.0	30.0	30.0		
<b>Entered by</b>	PM						
<b>Proofed by</b>	CH						
			<b>Temp</b>	<b>Salinity</b>	<b>DO</b>	<b>Saturation</b>	
			<b>C</b>	<b>ppt</b>	<b>ppm</b>	<b>%</b>	
		Site 1 - OM	17.1	28.3	8.2	100.8%	
		Site 1 - 1M	16.9	28.8	8.4	103.2%	
		Site 1 - 2M	16.8	29.2	8.6	105.7%	
		Site 1 - 3M	16.8	29.5	8.5	104.7%	
		Site 2 - OM	17.9	28.0	7.9	98.5%	
		Site 2 - 1M	17.7	28.6	8.0	99.7%	
		Site 2 - 2M	17.5	29.1	8.2	102.1%	
		Site 2 - 3M	17.4	29.3	8.1	100.8%	
		Site 3 - OM	19.0	28.5	7.8	99.6%	
		Site 3 - 1M	17.9	29.1	8.0	100.4%	
		Site 3 - 2M	17.5	29.3	8.0	99.8%	
		Site 3 - 3M	17.3	29.5	8.0	99.5%	
		Site 4 - OM	19.5	29.8	8.1	105.2%	
		Site 4 - 1M	19.4	29.9	8.1	105.1%	
		Site 4 - 1.5M	19.3	30.0	8.1	105.0%	
		Site 5 - OM	22.3	28.8	8.3	112.8%	
		Site 6 - OM	26.4	26.2	11.4	164.0%	

**SPRUCE CREEK ASSOCIATION - Water Quality Data**

<b>Date</b>	08/30/05						
<b>Time</b>	1445						
<b>Monitors</b>	PM DF						
<b>Weather Comments</b>	Rain off and on all day						
<b>Cloud Cover</b>	Overcast						
<b>Wind Conditions</b>	Slight Breeze						
<b>Wind Direction</b>	N						
<b>Waves</b>	Ripples						
<b>Tide</b>	Low - 15:03 / 1.77 ft						
<b>RESULTS</b>	<b>Time</b>		<b>OM</b>	<b>1M</b>	<b>2M</b>	<b>3M</b>	<b>Comments</b>
Site 1: Bond Rd	1620	DO (ppm)	7.9	8.1	8.1	8.1	Changed batteries on salinity meter. Use 27.7
		Temp (oC)	19.4	18.3	17.6	17.2	
		Salinity (ppt)	28.3	28.5	28.5	28.6	
Site 2: Eagle Pt	1630	DO (ppm)	8.2				
		Temp (oC)	20.2				
		Salinity (ppt)	28.5				
Site 3: Moffat's Dock	1647	DO (ppm)	7.7	7.8	7.7		More wind (easterly)
		Temp (oC)	20.8	20.1	20.0		
		Salinity (ppt)	27.8	28.3	28.7		
Site 4: Trading Post	1535	DO (ppm)	7.4	7.2			2nd reading = .5M. 2 ducks above crossing, 2 below.
		Temp (oC)	23.8	23.7			
		Salinity (ppt)	27.3	28.5			
Site 5: Picott Rd	1525	DO (ppm)	6.7				No flow, muddy water.
		Temp (oC)	25.5				
		Salinity (ppt)	21.2				
Site 6: Wilson Rd	1515	DO (ppm)	15.0				Almost no water. Slight outflow trickle. Lots of dirt in water. Used 3.2 salinity.
		Temp (oC)	23.7				
		Salinity (ppt)	3.2				
Repeat Site: 1	1625	DO (ppm)	8.1	8.2	8.1	8.1	
		Temp (oC)	19.3	18.4	17.7	17.1	
		Salinity (ppt)	28.9	28.9	29.0	28.9	
<b>Entered by</b>	PM						
<b>Proofed by</b>	CH						
			Temp	Salinity	DO	Saturation	
			C	ppt	ppm	%	
		Site 1 - OM	19.4	28.3	7.9	101.5%	
		Site 1 - 1M	18.3	28.5	8.1	102.1%	
		Site 1 - 2M	17.6	28.5	8.1	100.7%	
		Site 1 - 3M	17.2	28.6	8.1	100.0%	
		Site 2 - OM	20.2	28.5	8.2	107.1%	
		Site 2 - 1M					
		Site 2 - 2M					
		Site 2 - 3M					
		Site 3 - OM	20.8	27.8	7.7	101.3%	
		Site 3 - 1M	20.1	28.3	7.8	101.6%	
		Site 3 - 2M	20.0	28.7	7.7	100.3%	
		Site 3 - 3M					
		Site 4 - OM	23.8	27.3	7.4	102.4%	
		Site 4 - 1M	23.7	28.5	7.2	100.2%	
		Site 5 - OM	25.5	21.2	6.7	92.3%	
		Site 6 - OM	23.7	3.2	15.0	180.5%	

SPRUCE CREEK ASSOCIATION - Water Quality Data							
Date	09/06/05						
Time	0630						
Monitors	PM ME						
Weather Comments							
Cloud Cover	None						
Wind Conditions	Calm						
Wind Direction							
Waves	Calm						
Tide	Low - 07:16 / 0.48 ft						
RESULTS	Time		OM	1M	2M	3M	Comments
Site 1: Bond Rd	0750	DO (ppm)	7.5	7.8	7.8	7.8	Refractometer = 32 at 0M. 3rd reading at 2.5M
		Temp (oC)	16.1	16.1	16.1	16.0	
		Salinity (ppt)	28.9	29.0	29.0	29.0	
Site 2: Eagle Pt	0740	DO (ppm)	7.5	7.6	7.6	7.3	Refractometer = 32 at 0M. 3rd reading at 2.5M
		Temp (oC)	16.7	16.8	16.8	16.8	
		Salinity (ppt)	29.0	29.0	29.0	29.2	
Site 3: Moffat's Dock	0730	DO (ppm)	6.8	6.9			Refractometer = 31 at 0M.
		Temp (oC)	17.0	16.7			
		Salinity (ppt)	28.9	29.0			
Site 4: Trading Post	0700	DO (ppm)	7.0	6.7			Refractometer = 31 at 0M. Used 27.9. Still flowing out. 2nd reading at .5M
		Temp (oC)	18.0	18.0			
		Salinity (ppt)	27.9	28.0			
Site 5: Picott Rd	0650	DO (ppm)	4.2				Refractometer = 27 at 0M. Used 24.0. Mist on water. Water murky.
		Temp (oC)	18.5				
		Salinity (ppt)	24.0				
Site 6: Wilson Rd	0640	DO (ppm)	6.7				Refractometer = 10 at 0M. Used 7.7. Slight outflow.
		Temp (oC)	15.5				
		Salinity (ppt)	7.7				
Repeat Site: 4	0700	DO (ppm)	6.9	6.7			
		Temp (oC)	18.0	18.0			
		Salinity (ppt)	28.1	28.2			
Entered by	PM						
Proofed by	CH						
			Temp	Salinity	DO	Saturation	
			C	ppt	ppm	%	
		Site 1 - OM	16.1	28.9	7.5	90.8%	
		Site 1 - 1M	16.1	29.0	7.8	94.5%	
		Site 1 - 2M	16.1	29.0	7.8	94.5%	
		Site 1 - 3M	16.0	29.0	7.8	94.3%	
		Site 2 - OM	16.7	29.0	7.5	91.9%	
		Site 2 - 1M	16.8	29.0	7.6	93.3%	
		Site 2 - 2M	16.8	29.0	7.6	93.3%	
		Site 2 - 3M	16.8	29.2	7.3	89.7%	
		Site 3 - OM	17.0	28.9	6.8	83.8%	
		Site 3 - 1M	16.7	29.0	6.9	84.6%	
		Site 3 - 2M					
		Site 3 - 3M					
		Site 4 - OM	18.0	27.9	7.0	87.4%	
		Site 4 - 1M	18.0	28.0	6.7	83.7%	
		Site 5 - OM	18.5	24.0	4.2	51.7%	
		Site 6 - OM	15.5	7.7	6.7	70.4%	

**SPRUCE CREEK ASSOCIATION - Water Quality Data**

<b>Date</b>	09/06/05						
<b>Time</b>	1215						
<b>Monitors</b>	SH LA						
<b>Weather Comments</b>	Incredible - not a cloud in the sky; NOTE: Started 45 minutes early						
<b>Cloud Cover</b>	None						
<b>Wind Conditions</b>	Calm						
<b>Wind Direction</b>	SW						
<b>Waves</b>	Ripples						
<b>Tide</b>	High - 13:19 / 8.98 ft						
<b>RESULTS</b>	<b>Time</b>		<b>OM</b>	<b>1M</b>	<b>2M</b>	<b>3M</b>	<b>Comments</b>
Site 1: Bond Rd	1310	DO (ppm)	8.3	8.3	8.4	8.3	
		Temp (oC)	16.0	15.3	15.8	15.7	
		Salinity (ppt)	28.6	27.7	28.4	28.3	
Site 2: Eagle Pt	1255	DO (ppm)	8.5	8.3	8.3	8.4	
		Temp (oC)	17.0	16.3	16.3	16.4	
		Salinity (ppt)	27.0	27.4	27.6	27.8	
Site 3: Moffat's Dock	1245	DO (ppm)	8.2	8.3	8.4	8.4	
		Temp (oC)	16.9	16.9	16.5	16.0	
		Salinity (ppt)	27.4	27.9	28.1	28.2	
Site 4: Trading Post	1245	DO (ppm)	7.7				
		Temp (oC)	19.6				
		Salinity (ppt)	29.9				
Site 5: Picott Rd	1225	DO (ppm)	7.8				Increased algae
		Temp (oC)	22.0				
		Salinity (ppt)	23.4				
Site 6: Wilson Rd	1230	DO (ppm)	9.2				Increased algae
		Temp (oC)	17.8				
		Salinity (ppt)	27.0				
Repeat Site: 1	1310	DO (ppm)	8.4	8.3	8.3	8.3	
		Temp (oC)	15.8	15.8	15.8	15.7	
		Salinity (ppt)	27.5	28.4	28.4	28.1	
<b>Entered by</b>	PM						
<b>Proofed by</b>	CH						
			Temp	Salinity	DO	Saturation	
			C	ppt	ppm	%	
		Site 1 - OM	16.0	28.6	8.3	100.1%	
		Site 1 - 1M	15.3	27.7	8.3	98.1%	
		Site 1 - 2M	15.8	28.4	8.4	100.8%	
		Site 1 - 3M	15.7	28.3	8.3	99.3%	
		Site 2 - OM	17.0	27.0	8.5	103.5%	
		Site 2 - 1M	16.3	27.4	8.3	99.9%	
		Site 2 - 2M	16.3	27.6	8.3	100.1%	
		Site 2 - 3M	16.4	27.8	8.4	101.6%	
		Site 3 - OM	16.9	27.4	8.2	99.9%	
		Site 3 - 1M	16.9	27.9	8.3	101.4%	
		Site 3 - 2M	16.5	28.1	8.4	102.0%	
		Site 3 - 3M	16.0	28.2	8.4	101.0%	
		Site 4 - OM	19.6	29.9	7.7	100.3%	
		Site 4 - 1M					
		Site 5 - OM	22.0	23.4	7.8	102.2%	
		Site 6 - OM	17.8	27.0	9.2	113.8%	

**SPRUCE CREEK ASSOCIATION - Water Quality Data**

<b>Date</b>	09/13/05						
<b>Time</b>	0640						
<b>Monitors</b>	SH ME						
<b>Weather Comments</b>							
<b>Cloud Cover</b>	None						
<b>Wind Conditions</b>	Calm						
<b>Wind Direction</b>							
<b>Waves</b>	Calm						
<b>Tide</b>	High - 06:50 / 7.77 ft						
<b>RESULTS</b>	<b>Time</b>		<b>OM</b>	<b>1M</b>	<b>2M</b>	<b>3M</b>	<b>Comments</b>
Site 1: Bond Rd	0655	DO (ppm)	8.5	8.6	8.6	8.6	
		Temp (oC)	14.5	14.5	14.4	14.4	
		Salinity (ppt)	30.7	30.6	30.6	30.7	
Site 2: Eagle Pt	0645	DO (ppm)	8.2	8.3	8.3	8.4	
		Temp (oC)	15.7	15.4	15.3	15.2	
		Salinity (ppt)	30.4	30.4	30.3	30.4	
Site 3: Moffat's Dock	0640	DO (ppm)	7.6	7.8	8.1	8.3	Nice sunrise
		Temp (oC)	17.0	16.5	15.8	15.0	
		Salinity (ppt)	29.5	29.5	29.6	29.7	
Site 4: Trading Post	0725	DO (ppm)	7.5	7.4			
		Temp (oC)	18.5	18.5			
		Salinity (ppt)	31.0	31.0			
Site 5: Picott Rd	0715	DO (ppm)	4.1	4.3			Strong flow coming in
		Temp (oC)	20.6	20.6			
		Salinity (ppt)	29.0	29.8			
Site 6: Wilson Rd	0710	DO (ppm)	4.9				Low water, low flow, flow is out to sea
		Temp (oC)	18.6				
		Salinity (ppt)	4.0				
Repeat Site: 3	0640	DO (ppm)	7.6	7.8	8.0	8.2	
		Temp (oC)	17.1	16.4	15.7	15.0	
		Salinity (ppt)	29.9	30.0	30.0	30.0	
<b>Entered by</b>	PM						
<b>Proofed by</b>	DF						
			<b>Temp</b>	<b>Salinity</b>	<b>DO</b>	<b>Saturation</b>	
			<b>C</b>	<b>ppt</b>	<b>ppm</b>	<b>%</b>	
		Site 1 - OM	14.5	30.7	8.5	100.7%	
		Site 1 - 1M	14.5	30.6	8.6	101.9%	
		Site 1 - 2M	14.4	30.6	8.6	101.7%	
		Site 1 - 3M	14.4	30.7	8.6	101.7%	
		Site 2 - OM	15.7	30.4	8.2	99.4%	
		Site 2 - 1M	15.4	30.4	8.3	100.0%	
		Site 2 - 2M	15.3	30.3	8.3	99.7%	
		Site 2 - 3M	15.2	30.4	8.4	100.8%	
		Site 3 - OM	17.0	29.5	7.6	94.0%	
		Site 3 - 1M	16.5	29.5	7.8	95.5%	
		Site 3 - 2M	15.8	29.6	8.1	97.9%	
		Site 3 - 3M	15.0	29.7	8.3	98.8%	
		Site 4 - OM	18.5	31.0	7.5	96.3%	
		Site 4 - 1M	18.5	31.0	7.4	95.0%	
		Site 5 - OM	20.6	29.0	4.1	54.1%	
		Site 6 - OM	18.6	4.0	4.9	53.7%	

**SPRUCE CREEK ASSOCIATION - Water Quality Data**

<b>Date</b>	09/13/05						
<b>Time</b>	1215						
<b>Monitors</b>	SB						
<b>Weather Comments</b>	12:15 = clear about 75 degrees; 1:15 = cloudy						
<b>Cloud Cover</b>	None						
<b>Wind Conditions</b>	Slight Breeze						
<b>Wind Direction</b>	S						
<b>Waves</b>	Calm						
<b>Tide</b>	Low - 12:53 / 1.38 ft						
<b>RESULTS</b>	<b>Time</b>		<b>OM</b>	<b>1M</b>	<b>2M</b>	<b>3M</b>	<b>Comments</b>
Site 1: Bond Rd	1315	DO (ppm)	8.5	8.1	8.1		
		Temp (oC)	19.0	17.4	17.1		
		Salinity (ppt)	31.2	30.9	30.9		
Site 2: Eagle Pt		DO (ppm)	7.8	8.1	8.1	8.1	
		Temp (oC)	19.0	18.7	18.5	18.2	
		Salinity (ppt)	30.8	30.8	30.9	30.9	
Site 3: Moffat's Dock		DO (ppm)	7.9	8.0			
		Temp (oC)	20.0	19.9			
		Salinity (ppt)	30.8	30.8			
Site 4: Trading Post	1230	DO (ppm)	7.4				
		Temp (oC)	22.0				
		Salinity (ppt)	30.8				
Site 5: Picott Rd		DO (ppm)	8.1				
		Temp (oC)	24.8				
		Salinity (ppt)	27.0				
Site 6: Wilson Rd		DO (ppm)	9.0				
		Temp (oC)	21.8				
		Salinity (ppt)	10.8				
Repeat Site: 1		DO (ppm)	8.5	8.0	8.2		
		Temp (oC)	18.9	17.3	17.0		
		Salinity (ppt)	30.9	30.9	30.9		
<b>Entered by</b>	PM						
<b>Proofed by</b>	DF						
			Temp	Salinity	DO	Saturation	
			C	ppt	ppm	%	
		Site 1 - OM	19.0	31.2	8.5	110.3%	
		Site 1 - 1M	17.4	30.9	8.1	101.8%	
		Site 1 - 2M	17.1	30.9	8.1	101.2%	
		Site 1 - 3M					
		Site 2 - OM	19.0	30.8	7.8	101.0%	
		Site 2 - 1M	18.7	30.8	8.1	104.3%	
		Site 2 - 2M	18.5	30.9	8.1	103.9%	
		Site 2 - 3M	18.2	30.9	8.1	103.4%	
		Site 3 - OM	20.0	30.8	7.9	104.2%	
		Site 3 - 1M	19.9	30.8	8.0	105.3%	
		Site 3 - 2M					
		Site 3 - 3M					
		Site 4 - OM	22.0	30.8	7.4	101.2%	
		Site 4 - 1M					
		Site 5 - OM	24.8	27.0	8.1	113.9%	
		Site 6 - OM	21.8	10.8	9.0	109.2%	

**SPRUCE CREEK ASSOCIATION - Water Quality Data**

<b>Date</b>	09/20/05						
<b>Time</b>	0631						
<b>Monitors</b>	PL RL						
<b>Weather Comments</b>							
<b>Cloud Cover</b>	Partly Cloudy						
<b>Wind Conditions</b>	Calm						
<b>Wind Direction</b>							
<b>Waves</b>	Calm						
<b>Tide</b>	Low - 07:09 / -0.79 ft						
<b>RESULTS</b>	<b>Time</b>		<b>OM</b>	<b>1M</b>	<b>2M</b>	<b>3M</b>	<b>Comments</b>
Site 1: Bond Rd	0724	DO (ppm)	7.0	7.2	7.2	7.1	Fish jumping, a little bit of foam on surface. 3rd reading = 2.5M; used refract
		Temp (oC)	16.6	16.6	16.6	16.6	
		Salinity (ppt)	31.5	31.5	31.5	31.5	
Site 2: Eagle Pt	0715	DO (ppm)	6.8	6.8	6.9	6.8	Film on surface; used refract
		Temp (oC)	16.9	16.9	16.9	16.9	
		Salinity (ppt)	32.0	32.0	32.0	32.0	
Site 3: Moffat's Dock	0708	DO (ppm)	6.2	6.2	6.1		Use refract to get salinity readings for all readings. Calm but incoming flow; lots of birds ALL along mud flats. Very low tide.
		Temp (oC)	16.8	16.8	16.7		
		Salinity (ppt)	32.0	32.0	32.0		
Site 4: Trading Post	0814	DO (ppm)	6.1	6.3			Film on water; overcast now, slight breeze making ripples; schooling fish; no algae.
		Temp (oC)	17.2	17.6			
		Salinity (ppt)	30.0	30.0			
Site 5: Picott Rd	0758	DO (ppm)	4.6				Very slight flow out, crab crawling under culvert, algae all gone.
		Temp (oC)	17.6				
		Salinity (ppt)	16.0				
Site 6: Wilson Rd	0747	DO (ppm)	4.3				Some flow outward, tides have been really high, perhaps accounting for high salinity. Remeasured with refract 3 times. Algae dead on bottom. Measured in 4" of water.
		Temp (oC)	16.1				
		Salinity (ppt)	15.0				
Repeat Site: 6	0747	DO (ppm)	4.2				
		Temp (oC)	16.1				
		Salinity (ppt)	15.0				
<b>Entered by</b>	PM						
<b>Proofed by</b>	DF						
			Temp	Salinity	DO	Saturation	
			C	ppt	ppm	%	
		Site 1 - OM	16.6	31.5	7.0	86.9%	
		Site 1 - 1M	16.6	31.5	7.2	89.4%	
		Site 1 - 2M	16.6	31.5	7.2	89.4%	
		Site 1 - 3M	16.6	31.5	7.1	88.2%	
		Site 2 - OM	16.9	32.0	6.8	85.2%	
		Site 2 - 1M	16.9	32.0	6.8	85.2%	
		Site 2 - 2M	16.9	32.0	6.9	86.4%	
		Site 2 - 3M	16.9	32.0	6.8	85.2%	
		Site 3 - OM	16.8	32.0	6.2	77.5%	
		Site 3 - 1M	16.8	32.0	6.2	77.5%	
		Site 3 - 2M	16.7	32.0	6.1	76.1%	
		Site 3 - 3M					
		Site 4 - OM	17.2	30.0	6.1	75.9%	
		Site 4 - 1M	17.6	30.0	6.3	79.0%	
		Site 5 - OM	17.6	16.0	4.6	53.1%	
		Site 6 - OM	16.1	15.0	4.3	47.8%	

**SPRUCE CREEK ASSOCIATION - Water Quality Data**

<b>Date</b>	09/20/05						
<b>Time</b>	1334						
<b>Monitors</b>	ME SH						
<b>Weather Comments</b>							
<b>Cloud Cover</b>	Intermittent Rain						
<b>Wind Conditions</b>	Slight Breeze						
<b>Wind Direction</b>	SE						
<b>Waves</b>	Ripples						
<b>Tide</b>	High - 13:15 / 10.57 ft						
<b>RESULTS</b>	<b>Time</b>		<b>OM</b>	<b>1M</b>	<b>2M</b>	<b>3M</b>	<b>Comments</b>
Site 1: Bond Rd	1435	DO (ppm)	7.8	7.8	7.9	7.8	
		Temp (oC)	16.7	16.6	16.5	16.4	
		Salinity (ppt)	30.7	30.7	30.8	30.8	
Site 2: Eagle Pt	1425	DO (ppm)	7.7	7.7	7.7	7.7	
		Temp (oC)	16.8	16.6	16.7	16.5	
		Salinity (ppt)	30.4	30.5	30.5	30.5	
Site 3: Moffat's Dock	1420	DO (ppm)	7.8	7.8	7.8	7.6	Rain slowed to light drizzle.
		Temp (oC)	16.7	16.7	16.7	16.6	
		Salinity (ppt)	30.7	30.7	30.7	30.8	
Site 4: Trading Post	1352	DO (ppm)	7.3	7.4			
		Temp (oC)	17.2	16.9			
		Salinity (ppt)	30.5	30.5			
Site 5: Picott Rd	1342	DO (ppm)	7.2				
		Temp (oC)	17.9				
		Salinity (ppt)	29.9				
Site 6: Wilson Rd	1335	DO (ppm)	7.3	7.2			2nd: Very swift current; quite deep. Current took the probes from sight. Call it a half meter.
		Temp (oC)	18.8	17.7			
		Salinity (ppt)	26.2	30.0			
Repeat Site: 4	1352	DO (ppm)	7.3	7.4			
		Temp (oC)	16.9	16.9			
		Salinity (ppt)	30.5	30.5			
<b>Entered by</b>	PM						
<b>Proofed by</b>	DF						
			<b>Temp</b>	<b>Salinity</b>	<b>DO</b>	<b>Saturation</b>	
			<b>C</b>	<b>ppt</b>	<b>ppm</b>	<b>%</b>	
		Site 1 - OM	16.7	30.7	7.8	96.6%	
		Site 1 - 1M	16.6	30.7	7.8	96.4%	
		Site 1 - 2M	16.5	30.8	7.9	97.5%	
		Site 1 - 3M	16.4	30.8	7.8	96.1%	
		Site 2 - OM	16.8	30.4	7.7	95.3%	
		Site 2 - 1M	16.6	30.5	7.7	95.0%	
		Site 2 - 2M	16.7	30.5	7.7	95.2%	
		Site 2 - 3M	16.5	30.5	7.7	94.8%	
		Site 3 - OM	16.7	30.7	7.8	96.6%	
		Site 3 - 1M	16.7	30.7	7.8	96.6%	
		Site 3 - 2M	16.7	30.7	7.8	96.6%	
		Site 3 - 3M	16.6	30.8	7.6	94.0%	
		Site 4 - OM	17.2	30.5	7.3	91.2%	
		Site 4 - 1M	16.9	30.5	7.4	91.9%	
		Site 5 - OM	17.9	29.9	7.2	90.8%	
		Site 6 - OM	18.8	26.2	7.3	91.6%	
		Site 6 - 1M	17.7	30.0	7.2	91.0%	

**SPRUCE CREEK ASSOCIATION - Water Quality Data**

<b>Date</b>	09/27/05						
<b>Time</b>	0700						
<b>Monitors</b>	PL RL						
<b>Weather Comments</b>	Rain last night & wind						
<b>Cloud Cover</b>	None						
<b>Wind Conditions</b>	Breezy						
<b>Wind Direction</b>	NW						
<b>Waves</b>	Small waves						
<b>Tide</b>	High - 07:33 / 7.46 ft						
<b>RESULTS</b>	<b>Time</b>		<b>OM</b>	<b>1M</b>	<b>2M</b>	<b>3M</b>	<b>Comments</b>
Site 1: Bond Rd	0802	DO (ppm)	7.4	7.5	7.6	7.6	Refract = 31
		Temp (oC)	13.4	13.4	13.3	13.2	
		Salinity (ppt)	25.0	25.1	25.4	26.0	
Site 2: Eagle Pt	0750	DO (ppm)	7.6	7.5	7.5	7.5	Refract = 32 DO calibrated at 32
		Temp (oC)	13.7	13.7	13.6	13.6	
		Salinity (ppt)	25.0	25.0	25.2	25.0	
Site 3: Moffat's Dock	0743	DO (ppm)	7.4	7.4	7.4	7.5	Refract = 32 at 1M depth Calibrated DO at 32
		Temp (oC)	14.4	14.3	13.7	13.5	
		Salinity (ppt)	24.5	25.0	25.0	25.0	
Site 4: Trading Post	0852	DO (ppm)	7.5	7.4			Gr. stringy algae on dock 2nd reading = 2M
		Temp (oC)	16.7	16.3			
		Salinity (ppt)	25.0	25.6			
Site 5: Picott Rd	0845	DO (ppm)	4.8				Water running out
		Temp (oC)	17.7				
		Salinity (ppt)	23.0				
Site 6: Wilson Rd	0835	DO (ppm)	5.0				Water running out. Water low for high tide.
		Temp (oC)	15.3				
		Salinity (ppt)	3.0				
Repeat Site: 1	0802	DO (ppm)	7.6	7.5	7.6	7.6	
		Temp (oC)	13.3	13.3	13.2	13.2	
		Salinity (ppt)	26.0	26.0	26.0	26.0	
<b>Entered by</b>	PM						
<b>Proofed by</b>	DF						
			Temp	Salinity	DO	Saturation	
			C	ppt	ppm	%	
		Site 1 - OM	13.4	25.0	7.4	82.8%	
		Site 1 - 1M	13.4	25.1	7.5	83.9%	
		Site 1 - 2M	13.3	25.4	7.6	85.0%	
		Site 1 - 3M	13.2	26.0	7.6	85.2%	
		Site 2 - OM	13.7	25.0	7.6	85.3%	
		Site 2 - 1M	13.7	25.0	7.5	84.4%	
		Site 2 - 2M	13.6	25.2	7.5	84.3%	
		Site 2 - 3M	13.6	25.0	7.5	84.2%	
		Site 3 - OM	14.4	24.5	7.4	84.2%	
		Site 3 - 1M	14.3	25.0	7.4	84.3%	
		Site 3 - 2M	13.7	25.0	7.4	83.3%	
		Site 3 - 3M	13.5	25.0	7.5	84.1%	
		Site 4 - OM	16.7	25.0	7.5	89.7%	
		Site 4 - 1M	16.3	25.6	7.4	88.1%	
		Site 5 - OM	17.7	23.0	4.8	57.9%	
		Site 6 - OM	15.3	3.0	5.0	50.8%	

**SPRUCE CREEK ASSOCIATION - Water Quality Data**

<b>Date</b>	09/27/05						
<b>Time</b>	1305						
<b>Monitors</b>	PM SH						
<b>Weather Comments</b>							
<b>Cloud Cover</b>	Partly Cloudy						
<b>Wind Conditions</b>	Breezy / Strong						
<b>Wind Direction</b>	NW						
<b>Waves</b>	Small waves						
<b>Tide</b>	Low - 01:25 / 1.23 ft						
<b>RESULTS</b>	<b>Time</b>		<b>OM</b>	<b>1M</b>	<b>2M</b>	<b>3M</b>	<b>Comments</b>
Site 1: Bond Rd	1350	DO (ppm)	8.2				Didn't have a boat. Took reading off rocks just under trestles.
		Temp (oC)	19.0				
		Salinity (ppt)	25.0				
Site 2: Eagle Pt		DO (ppm)					Didn't have a boat.
		Temp (oC)					
		Salinity (ppt)					
Site 3: Moffat's Dock		DO (ppm)					Didn't have a boat.
		Temp (oC)					
		Salinity (ppt)					
Site 4: Trading Post	1305	DO (ppm)	8.0	8.2			2nd reading = .5M
		Temp (oC)	18.4	18.1			
		Salinity (ppt)	28.3	28.5			
Site 5: Picott Rd	1318	DO (ppm)	9.9				Gentle flow out to sea. Strong breeze.
		Temp (oC)	20.9				
		Salinity (ppt)	18.9				
Site 6: Wilson Rd	1327	DO (ppm)	12.0				Very low water.
		Temp (oC)	17.0				
		Salinity (ppt)	2.5				
Repeat Site: 5	1305	DO (ppm)	9.9				
		Temp (oC)	20.9				
		Salinity (ppt)	18.9				
<b>Entered by</b>	PM						
<b>Proofed by</b>	DF						
			Temp	Salinity	DO	Saturation	
			C	ppt	ppm	%	
		Site 1 - OM	19.0	25.0	8.2	102.6%	
		Site 1 - 1M					
		Site 1 - 2M					
		Site 1 - 3M					
		Site 2 - OM					
		Site 2 - 1M					
		Site 2 - 2M					
		Site 2 - 3M					
		Site 3 - OM					
		Site 3 - 1M					
		Site 3 - 2M					
		Site 3 - 3M					
		Site 4 - OM	18.4	28.3	8.0	100.9%	
		Site 4 - 1M	18.1	28.5	8.2	102.9%	
		Site 5 - OM	20.9	18.9	9.9	123.8%	
		Site 6 - OM	17.0	2.5	12.0	126.0%	